

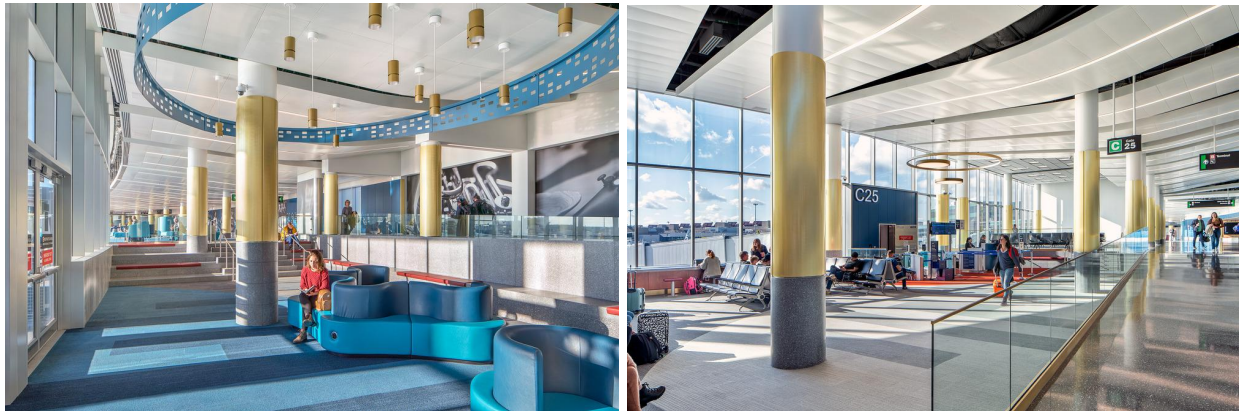


Metals + Architectural Products

Móz Designs' Champagne Columns Bring a Luxury Feel to Logan Airport

Móz Designs teams up with FM Architecture for the Boston Airport's renovation

(Boston, Massachusetts) March 2023 — Award-winning metal experts, [Móz Designs](#), are excited to share the renovation of Logan International Airport's Terminal C to B Connector in Boston, Massachusetts. With the ultimate vision of continuous passenger connection across all terminals, [FM Architecture](#) specified 65 of Móz's aluminum column covers to transform unsightly structural details into elevated architectural solutions—creating dynamic visuals for a seamless continuity between columns, ceilings, and entry portals for all retail locations.



While functional structures for high-traffic spaces deliver on durability, it often comes at the expense of aesthetic value and design integrity. Móz Designs' uniquely-formed metal column solutions were able to achieve both of these important architectural elements—various shapes and sizes, impactful colors, and hardwearing finishes transform the airport's indispensable support beams into focal points, capturing texture, depth, and movement as a defining feature of the space while maintaining longevity. Logan Airport's expansive installation features Móz's Column Covers in both round and rectangular configurations, completed with sophisticated Classic True Brass and White Powder Coat finishes. Custom trim detailing along the walls in the Classic True Brass maintains the design's continuous feel.

“Our top priority is always to maintain our client's desired aesthetic,” says Móz's Executive VP, Tripp Sandford. “At the Logan Airport, the vision was to integrate champagne-centric architectural features for a sophisticated, luxurious airport experience. We developed and hand-finished Column Covers that transition from stone Terrazzo, to Brass, to a White Powder Coat finish—echoing the surrounding environment's architecture with intricate details that give the space cohesion and direction.”

In high-traffic public spaces, material durability is a key consideration—designed with 100% recyclable solid-core aluminum, Móz's Column solutions are able to withstand the wear and tear of high occupancies and disinfectants that occur in an airport setting. Produced in Móz's Bay Area factory, each column arrived ready for installation, saving precious time in the field. Móz also worked with parent company Armstrong Ceilings to ensure the finishes were met on all edge and trim conditions, matching the columns and entry portals.



Metals + Architectural Products

COLLABORATORS

Architect: [FM Architecture](#)

Contractor: Suffolk Construction

Installer: Century Drywall

Photographer: © William Horne

About Móz Designs

Metals + Architectural Products

Móz designs and fabricates architectural metal sheets, columns, ceilings, walls, and dividers in Bay Area, CA. Using a unique balance of color, texture, and grain, Móz redefines metal surfacing materials to create architectural metal products for commercial, hospitality, workplace, transportation, entertainment, and retail markets, from large-scale exterior installations to easy-to-assemble products and surface applications. Móz's innovative products, solutions, and dedication to customer service help designers achieve their vision on time and on budget. The Móz business, a wholly-owned subsidiary of Armstrong World Industries since August 2020, operates independently but collaboratively with AWI. Visit mozdesigns.com for more information or follow us on [Instagram](#), [Facebook](#), [Twitter](#) and [LinkedIn](#).

Press Contact: Chloe Edwards

[Paxson Fay](#), chloe@paxsonfay.com

Móz Designs Contact: Linda Gutierrez

[Móz Designs](#), marketing@mozdesigns.com