



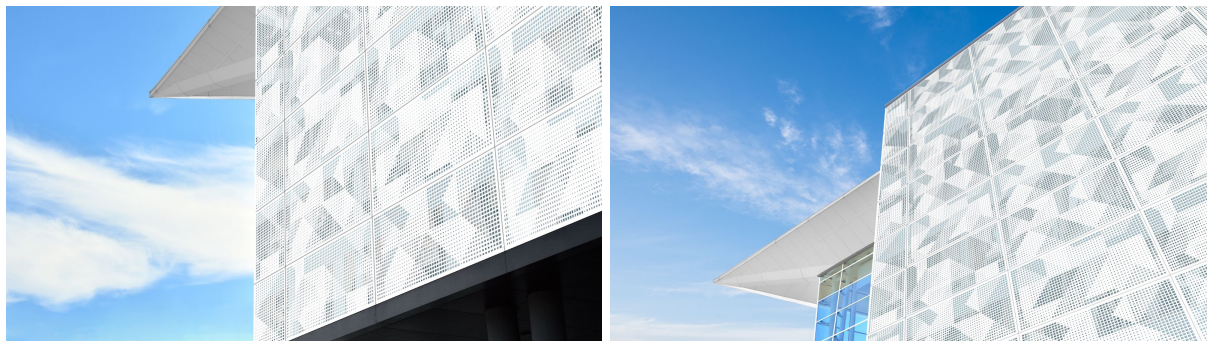
Metals + Architectural Products

### **Architectural Metals Reimagined: A Pattern Exploration**

Móz Designs' latest collection draws from the dynamic movement of our natural and built environments

(San Francisco Bay Area, CA) September 2022 — Award-winning metal experts [Móz Designs](#) introduces a new expansion to their signature Laser Cut Collection: ten new patterns inspired by motion in the built and natural environment. Drawing from the ever-changing state of our surroundings, Móz's newest collection—Metals in Motion—examines patterns derived from natural elements like sand dunes, wind, and the jungle, as well as inspiration from our digital and built environment with nods to technology and flight. While each design captures dynamic motion within a single panel, Móz offers designers the rare opportunity to match patterns across multiple panels for a large-scale wow factor. The striking new offerings speak to Móz's unique development and fabrication capabilities in the metals industry—the patterns offer a diverse metal material suitable for columns, walls, ceilings, and partitions for interior and exterior solutions alike.

“The more time I spend outdoors, the more enamored I become with the ever-changing details of our surroundings. How the ocean pushes the sand, the way the sun reflects off rocks, the evolution of our built environment—each angle reveals a new perspective,” says Dzoanna Pavulina, Móz Designs' Product Designer. “I was inspired to create designs that evoke the same feeling—incorporating a sense of movement into architectural metal installations that take on subtle new forms from every angle.”



The ten new patterns—Jungle, Mosaic, Cyber, Harvest, Twinkle, Wind, Flight, Grove, Dune, and Cascade—encompass both the soft, rounded shapes and structured, geometric figures of our environment. Grove, Cascade, Dune, and Flight are available in three variations that bookend each other, so designers can mix and match the coordinating patterns in a number of combinations—a standout solution new to lasercut metal providers. These new series of patterns provide designers with a standard, easy-to-specify product that still displays a unique, custom-like appearance. Embracing the individuality achievable when movement is the muse, Móz's Metals in Motion collection plays with shape, pattern, and perspective with a timeless, durable material platform.



Metals + Architectural Products



Designed with 100% recyclable aluminum, one of the most sustainable materials in the world, MóZ's Metals in Motion keeps the environment in mind from conception to construction. With a new range of patterns inspiring enough to stand alone or make a dynamic visual impact when paired together, the possibilities of MóZ's new designs adapt to be the perfect solution for a project's needs. The Laser Cut collection patterns are laser cut out of solid-core 3/16" aluminum 5052 material in 4' x 8' standard sheet sizes, and can be seamlessly applied to MóZ's Column, Wall, and Divider offerings. Suitable for both interior and exterior applications, the manufacturer's Hat Channel and Key-Slot Wall Panels are perfect for mounting the stunning Laser Cut panels to allow for backlighting or necessary clearance.

## About MóZ Designs

### Metals + Architectural Products

MóZ designs and fabricates architectural metal sheets, columns, ceilings, walls, and dividers in The San Francisco Bay Area, CA. Using a unique balance of color, texture, and grain, MóZ redefines metal surfacing materials to create architectural metal products for commercial, hospitality, workplace, transportation, entertainment, and retail markets, from large-scale exterior installations to easy-to-assemble products and surface applications. MóZ's innovative products, solutions, and dedication to customer service help designers achieve their vision on time and on budget. The MóZ business, a wholly-owned subsidiary of Armstrong World Industries since August 2020, operates independently but collaboratively with AWI. Visit [mozdesigns.com](https://mozdesigns.com) for more information or follow us on [Instagram](#), [Facebook](#), [Twitter](#) and [LinkedIn](#).

**Press Contact: Chloe Edwards**

[Paxson Fay](#), [chloe@paxsonfay.com](mailto:chloe@paxsonfay.com)

**MóZ Designs Contact: Linda Gutierrez**

[MóZ Designs](#), [marketing@mozdesigns.com](mailto:marketing@mozdesigns.com)