

Móz Weave Wall

Size and Layout Options



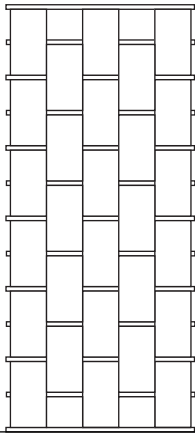
Create an impressive effect of undulating metal with Móz Weave Wall. Ready to install, Móz Weave Wall adds color, texture and movement to your environment and is available in a variety of sizes to suit many spaces.

Standard Panel Sizes

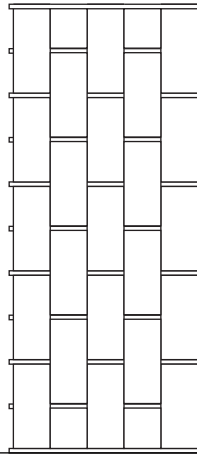
Widths:
23 3/4", 29 3/4" and 35 3/4"

Lengths
42", 54" , 66", 78" and 90"

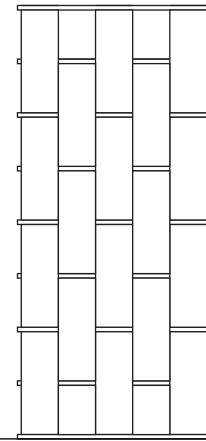
SAMPLE SIZES AND LAYOUTS



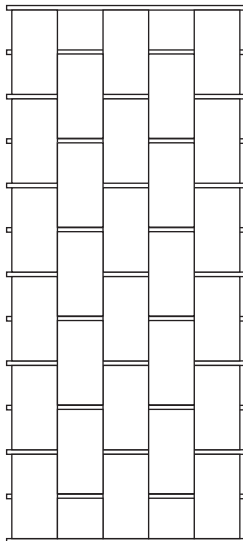
10'-5" x 23' overall size
30 panels, each 23 3/4" x 42"
1.90" diameter poles



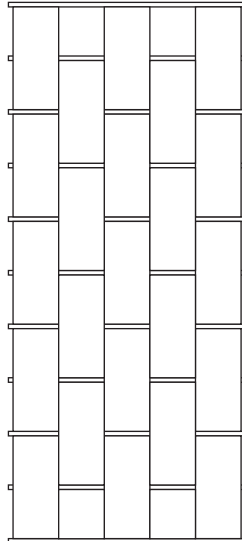
10'-5" x 24'-2" overall size
25 panels, each 23 3/4" x 54"
1.90" diameter poles



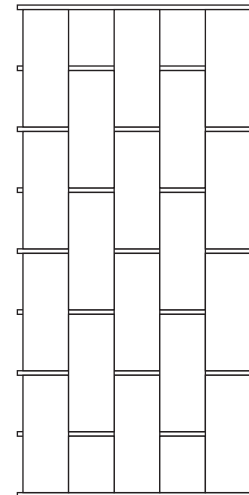
10'-5" x 23'-4" overall size
20 panels, each 23 3/4" x 66"
2-7/8" diameter poles (on 66" panels and longer)



13' x 29' 3" overall size
25 panels, each 29 3/4" x 54"
1.90" diameter poles



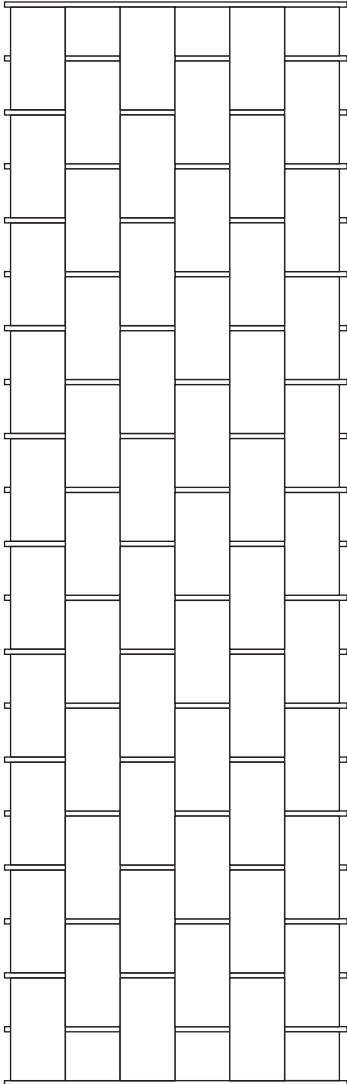
13' x 29' 5" overall size
25 panels, each 29 3/4" x 66"
2-7/8" diameter poles



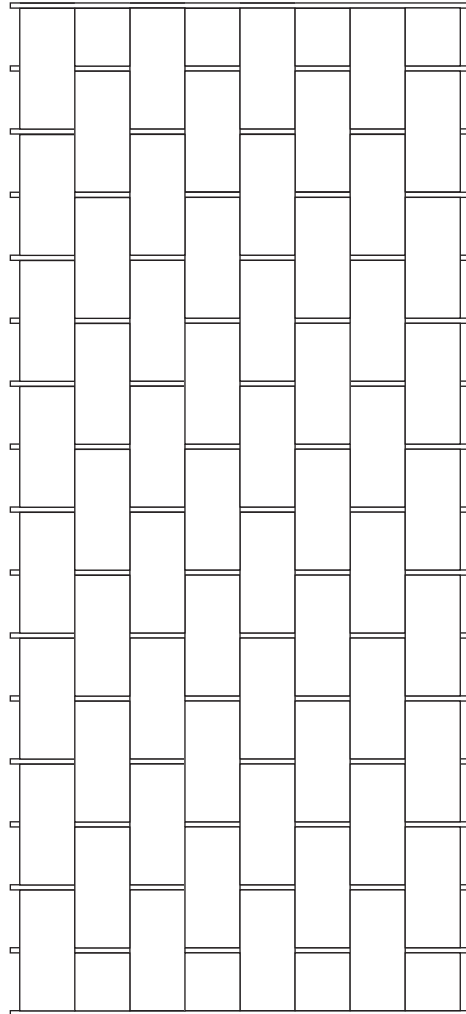
13' x 27'-4" overall size
20 panels, each 29 3/4" x 78"
2-7/8" diameter poles

Móz Weave Wall

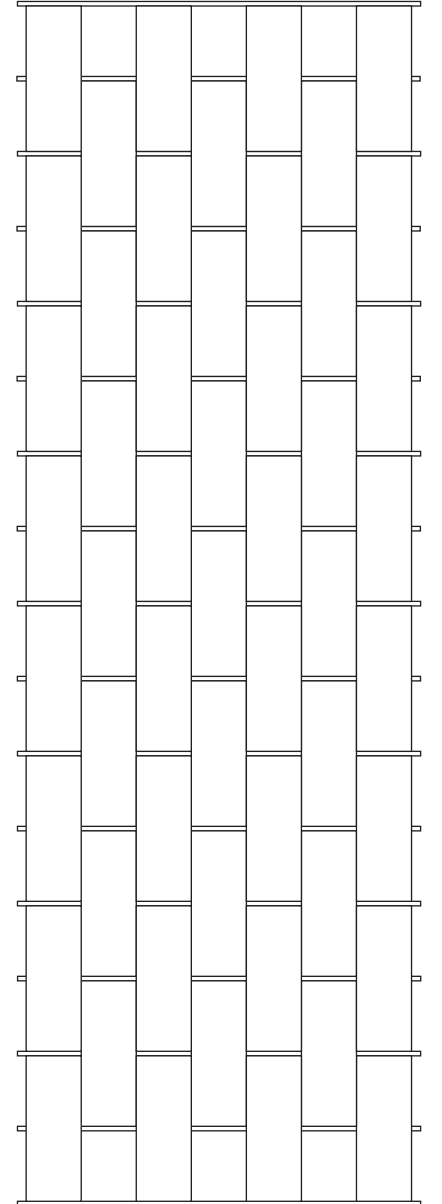
Size and Layout Options (continued)



18'-6" x 58'-4" overall size
60 panels, each 35 3/4" x 66"
2-7/8" diameter poles (on 66" panels and longer)



24'-6" x 54'-6" overall size
64 panels, each 35 3/4" x 78"
2-7/8" diameter poles



21'-2" x 63'-6" overall size
56 panels, each 35 3/4" x 90"
2-7/8" diameter poles

CUSTOM OPTIONS

Customize your Weave Wall by varying panel sizes and/or alternating color & grains.