

Ma Metal architecture

April 2022

metalarchitecture.com

Readers' Choice Awards for 2022

See how weathering steel has become a popular design option

Grand Avenue Park Bridge is an experience of discovery

Check out the new education center inspired by the Ozarks

MTC Modern Trade Communications

14



20



PHOTO COURTESY OF JOHNSSEN SCHWALING

26



PHOTO: TZU CHEN, RALEIGH, N.C.

32



PHOTO: BRIAN THOMAS JONES

14 SPECIAL FEATURE: READERS' CHOICE AWARDS FOR 2022

Of the 24 products selected for this year's Readers' Choice Awards, 13 are specifically designed for roof applications, with most being metal roof material. Readers were also interested in more decorative building products, including perforated and expanded metal.

20 DESIGN TREND: ONE-OF-A-KIND RUSTIC DESIGNS

With its unique, rustic appearance, weathering steel has become a popular design option for all types of buildings and applications.

24 CREATIVE METAL: GRAND BRIDGE

The new \$20 million Grand Avenue Park Bridge was designed to repair a divide from the city Everett, Wash., to its waterfront, which is home to a naval shipyard and a growing mixed-use district.

26 BUILDING PROFILE: HILLSIDE HOUSE

Designed by partners and design duo Douglas Pierson and Youn Choi, pod architecture + design PLLC, Chapel Hill, N.C., their black-clad house blends into a wooded site in Carrboro, N.C.

PRODUCT TECH: METAL BUILDINGS

30 SMP versus PVDF

31 Standing Seam Standing Tall

Departments

3 Editor's Corner

6 Online Contents and Events

8 Constructive Insights

10 Industry News

32 Market Feature: Residential and Mixed-Use

43 New Products

44 Product Catalog: Roofs

46 Product Catalog: Daylighting

47 Ad Index

48 Top Honors



PHOTO COURTESY OF ADAM HUNTER, LMN ARCHITECTS

On the cover: The Grand Avenue Park Bridge in Everett, Wash., is a popular destination, enhancing the city's pedestrian life and its growing mixed-use waterfront district. **Turn to page 24.**

Reader's Choice Awards for 2022

Roofing products dominate the top products

By Paul Deffenbaugh, Editorial Director

Readers of *Metal Architecture* selected Petersen Aluminum Corp.'s Precision Series Flat Tiles as their top Reader's Choice Awards product in 2022. We identified the Elk Grove Village, Ill.-based company's product by ranking our reader's interest in products that were mentioned in editorial content in the magazine during 2021. We measure that interest based on the leads generated from both the response to circle numbers in the magazine and

the MetalConnect emails that provide further information to our readers about these products.

Of this year's 24 products selected, 13 of them are specifically designed for roof applications, with most of those being metal roof material. Two of them are solar panels from Panasonic Corp., Newark, N.J., and Solaria Corp., Fremont, Calif., and one is a clamp to hold a photovoltaic panel from S-5!, Colorado Springs, Colo.

MA readers were also interested in products from the more decorative side of the metal building product universe. Oakland, Calif.-based Móz Designs' new earth-toned

colors for aluminum sheets and Minneapolis-based Sherwin-Williams Coil Coatings' Fluropon metal trends color collection bring design options to high-performance metal building products.

While not exactly decorative, you could add into that group the perforated and expanded metal products from Wallner Expac Inc., Ontario, Calif.; Lorin Industries, Muskegon, Mich.; and Metl-Span, Lewisville, Texas, that were selected.

Product coverage is chosen by the editors of the magazine.

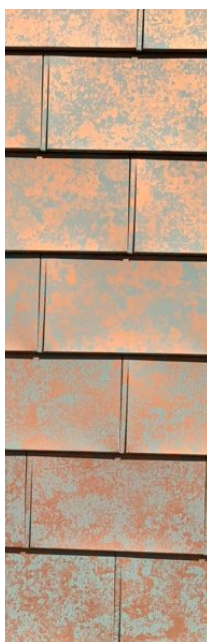
Check out the top 24 products from 2021 as identified by our readers in the *Metal Architecture* Readers' Choice Awards.

1

PETERSEN ALUMINUM CORP. PRECISION SERIES FLAT TILES AUGUST 2021

Petersen's Precision Series Flat Tiles are stamped metal tiles for roofs with a minimum slope of 3:12 and walls. The interlocking tiles are installed directly over plywood or elevated channels with concealed fasteners. No sealant is required at air permeable tile joints. The small size of the tiles allows thermal movement. Precision Series Flat Tiles are covered by the PAC-CLAD 30-year finish warranty.

www.pac-clad.com

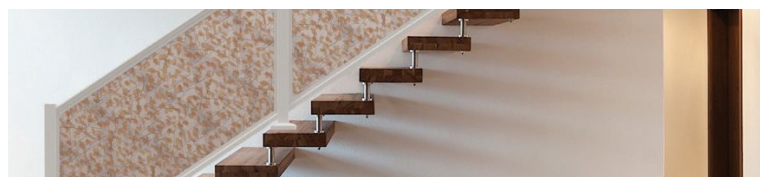


2

FEENEY INC. 1/4-INCH-THICK ALUMINUM AND RESIN INFILL PANELS AUGUST 2021

Feeney offers 1/4-inch-thick aluminum and resin infill panels for its DesignRail railing system. Resin infill panels are embedded with organic materials including grasses, leaves and branches, and have a sandstone finish. Aluminum infill panels are laser cut in a variety of geometric and nature-inspired patterns including waves and seagrass. There are nine standard laser-cut patterns and 15 standard powder-coated colors.

www.feeneyinc.com





3

CLASSIC METAL ROOFING SYSTEMS OXFORD SHINGLES

AUGUST 2021

Classic Metal Roofing Systems' Oxford Shingles are aluminum, PVDF-coated shingles that mimic the look of asphalt shingles. The 0.024-inch-thick aluminum shingles are 12 inches wide by 60 inches long and weigh 40 pounds per square. They have a four-way interlocking profile that withstands hurricane-strength winds and hail. Oxford Shingles are installed on roofs to a 3:12 pitch, and their paint system resists fading and chalking.

www.classicmetalroofingsystems.com/product-info/styles/oxford-shingle



4

VICWEST BUILDING PRODUCTS CEDAR CREEK SHAKES

AUGUST 2021

Vicwest's Cedar Creek Shakes are produced in 28-gauge Galvalume. They have hidden fasteners and panels are 50 inches long by 12 inches wide. Cedar Creek Shakes come in six colors: Antique Brown, Burnished Slate, Ebony, Harvest Cedar, Shadow Deep Gray and Silver Springs.

vicwest.com

5

SOLARIA CORP. POWERXT 430R-PL 430-WATT SOLAR PANELS

OCTOBER 2021

Solaria's PowerXT 430R-PL 430-watt solar panels have high-power density and an optimized form. They have 20%-plus efficiency. PowerXT panels have the company's Pure Black technology that eliminates dead spots and failure points, enhances shade performance and provides an all-black aesthetic. PowerXT 400R-PM 400-watt solar panels are also offered. The solar panels come with a 25-year warranty.

www.solaria.com



6

MÓZ DESIGNS 11 EARTH-TONED COLORS OF ALUMINUM SHEETS

MAY 2021

Móz Designs offers 11 earth-toned colors of aluminum sheets in its Blendz Patina product line. Colors include rusted coppers, dark greens and grays. Aluminum sheets come 0.04-inch to 0.125-inch thick. Applications include interior and exterior wall panels, column covers and partitions.

mozdesigns.com



7

S-5! PVKONCEAL

OCTOBER 2021

S-5!'s PVKonceal conceals the lower or upper edges of a solar module arrays and mechanical and electrical components underneath. It is produced with light-gauge aluminum with a black Kynar 500 finish. PVKonceal creates a finished look prevents unwanted things from going under solar arrays. PVKonceal comes in 8-foot lengths and attaches directly to S-5!'s PVKIT.

www.s-5.com

