

Partitions add decor

The Manchette Studio LLC specified decorative aluminum partitions and a feature wall for a lobby and restaurant at **Carte Hotel** in **San Diego**. To separate the main lobby from the bar area, two 4-foot-wide by 10-foot-high panels were installed for a floor-to-ceiling partition. To separate the bar and dining areas, floor-to-ceiling, 4-foot-wide by 10-foot-high panels were installed. At an opening in a wall dividing a portion of the dining area, two 4-foot-wide by 8-foot-high panels were installed. At the back wall of the dining area, five 4-foot-wide by 10-foot-high panels were mounted for a feature wall.

In total, 13 laser-cut, aluminum panels with square posts were installed at four locations. Móz Designs supplied 1/4-inch-thick, laser-cut aluminum in Classic Khaki Coarse matte finish for the decorative components. The aluminum has a custom Carte pattern.

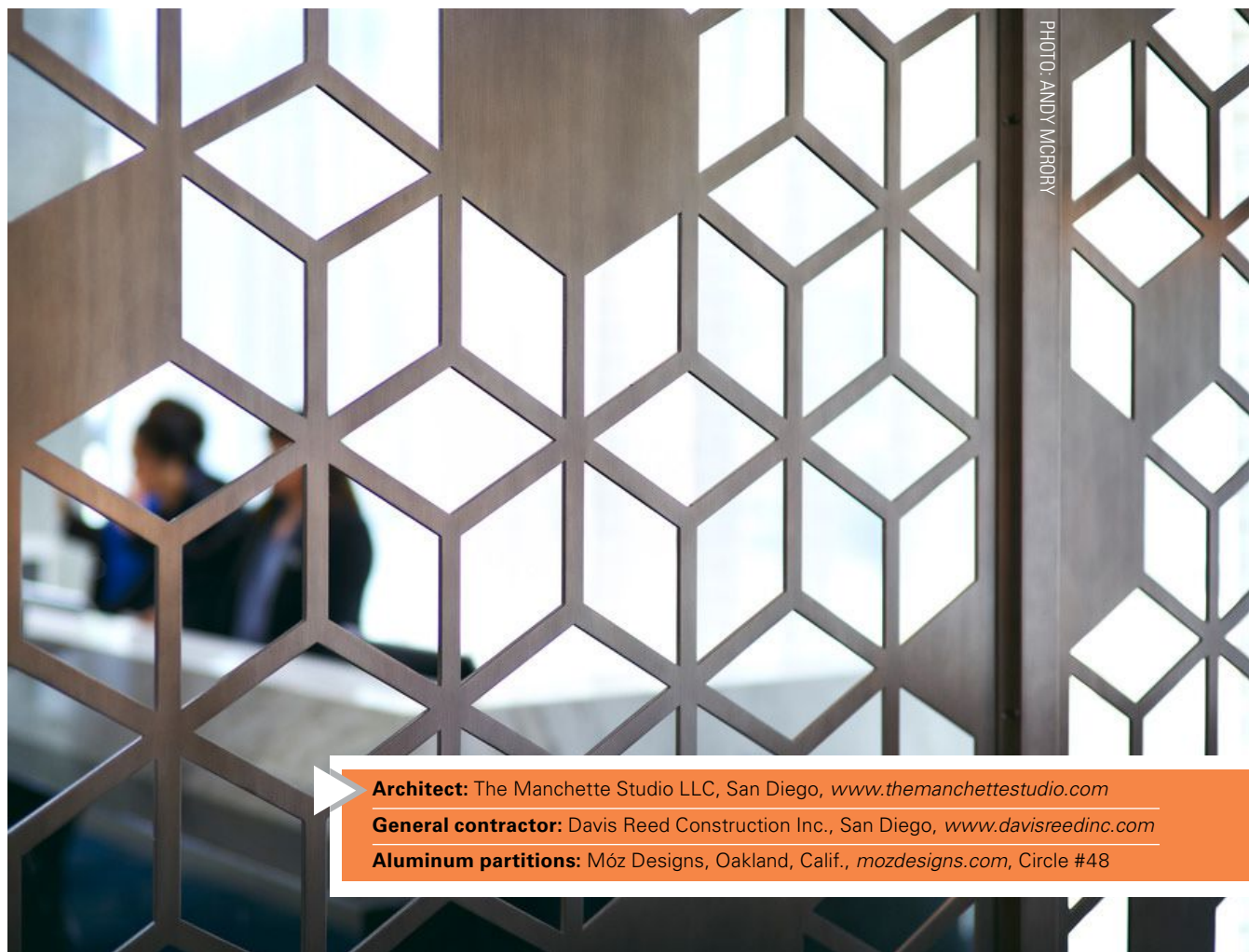


PHOTO: ANDY MCGRORY

Architect: The Manchette Studio LLC, San Diego, www.themanchettestudio.com

General contractor: Davis Reed Construction Inc., San Diego, www.davisreedinc.com

Aluminum partitions: Móz Designs, Oakland, Calif., mozdesigns.com, Circle #48

Custom colors with no minimums. Possibilities without limits.

At Laminators Inc., we welcome your unique vision—and bring you the panels you need to bring it to life.

We specialize in small batches and short lead times. We offer unlimited custom colors, no matter how many—or how few—pieces you need.

Break free from minimums and break into the realm of unlimited possibilities.



877.663.4227 | LaminatorsInc.com



Circle #17 on reader service card.

Photograph becomes perforated metal

For the lobby of **Hyatt Centric Mountain View** in **Hyatt Centric Mountain View, Calif.**, copper-colored aluminum was perforated with a custom pattern from a photograph of the Hetch Hetchy reservoir in Yosemite National Park. The perforated panels are backlit and contrast with lobby walls finished with dark blue wallpaper with silver-lined, angular shapes.

Móz supplied 10, 0.09-inch-thick, perforated aluminum panels in its Key-Slot Wall System. The panels have a Copper Patina finish and formed returns that click into mounting brackets to allow for backlighting. The project is certified LEED Silver.

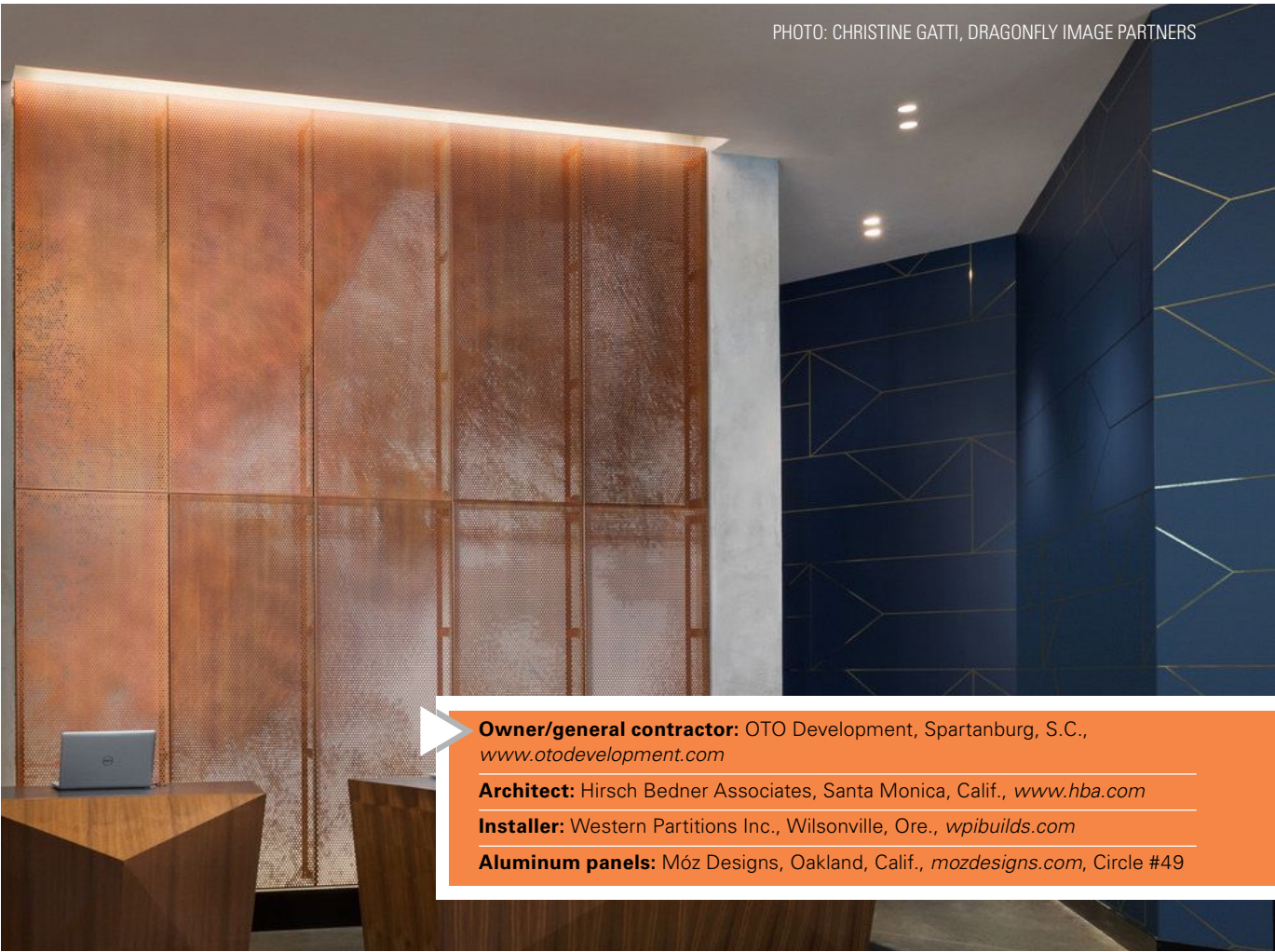


PHOTO: CHRISTINE GATTI, DRAGONFLY IMAGE PARTNERS

Owner/general contractor: OTO Development, Spartanburg, S.C., www.otodevelopment.com
Architect: Hirsch Bedner Associates, Santa Monica, Calif., www.hba.com
Installer: Western Partitions Inc., Wilsonville, Ore., wpibuilds.com
Aluminum panels: MóZ Designs, Oakland, Calif., mozdesigns.com, Circle #49

Premium Dutch Titanium Zinc

More than 125 years experience



NATUREL



NEO



NOIR



NUANCE
Blue



NUANCE
Green



NUANCE
Red

NedZink
www.nedzink.us



Circle #18 on reader service card.

Laser-cut column covers create focal point

An extensive renovation project at the **Sheraton Grand Seattle hotel** that began in 2005 concluded, in part, with backlit column covers in the lobby. A project goal was to disguise structural columns in the lobby and create a focal point.

RB Woodcraft Inc. installed six of Móz Designs' 3/16-inch-thick aluminum, custom laser-cut column covers. Three of the column covers have 5-foot, 3-inch diameters and are 10 feet, 6 inches tall. The other three have 4-foot, 7-inch diameters and are 12 feet, 9 inches tall.

The double-layer column covers include middle glass and accent rings, bases and capitals. Outer layers have a laser-cut pattern in Classic Medium Bronze with a poly-coat flat finish and Classic Titanium trim. Painted inner layers create a 3-D effect.

Between the tops and bottoms of the columns,



Owner: Seattle Union Street Associates LLP, Seattle

Architect: Hirsch Bedner Associates, Santa Monica, Calif., www.hba.com

General contractor: Allied Group, Neptune, N.J., addastar.com

Installer: RB Woodcraft Inc., Syracuse, N.Y., www.rbwoodcraft.com

Acrylic panels: Envel Design Corp., Newbury Park, Calif., www.enveldesign.com, Circle #50

Column covers: Móz Designs, Oakland, Calif., www.mozdesigns.com, Circle #51



METAL ROOF RETROFIT SOLUTIONS

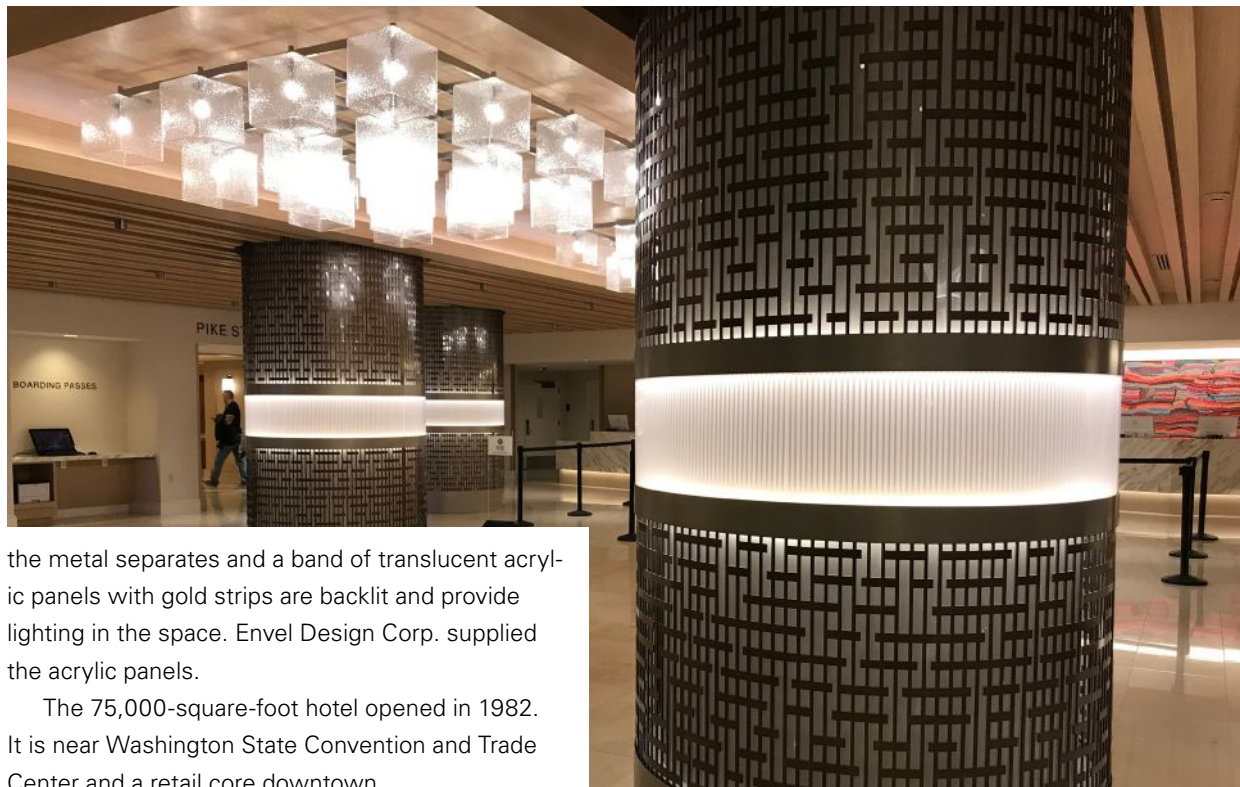
Roof Hugger is the **FIRST STEP** in Metal Roof **Retrofit** Solutions. Our Sub-Framing systems are designed to fit **ANY** existing metal roof. Huggers have had **extensive testing** to ensure they meet all current building codes. **Stay on schedule** with our prompt pricing, fabrication, and shipping.



800-771-1711

sales@roofhugger.com / www.RoofHugger.com

Circle #19 on reader service card.



the metal separates and a band of translucent acrylic panels with gold strips are backlit and provide lighting in the space. Envel Design Corp. supplied the acrylic panels.

The 75,000-square-foot hotel opened in 1982. It is near Washington State Convention and Trade Center and a retail core downtown.

ADVANCED ARCHITECTURAL

SHEET METAL & SUPPLY

We service your needs with consistent quality, workmanship and knowledge

It's part of the reason customers come back to us time after time.

Maximize your profits by decreasing your inventory.

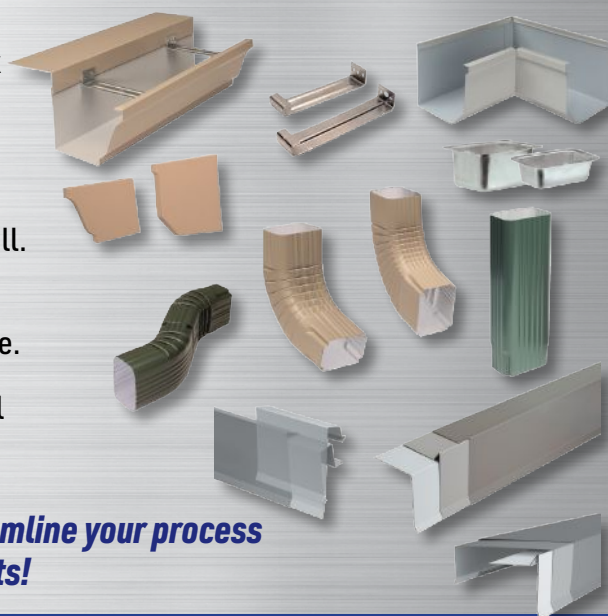
Reduce man hours - let us fabricate, you install.

98% of our American-made products are made-to-order and are manufactured inhouse.

Our products are made from domestic metal and custom crafted to your specifications.

Contact us today to see how we can streamline your process and maximize your profits!

(231) 861-0050 | info@advarchsm.com | www.advarchsm.com



Circle #20 on reader service card.



July 2021

Metal architecture

metalarchitecture.com

2021 Design Awards

Alan Scott unpacks embodied carbon

Be inspired by recent hospitality projects

See how metal buildings create an award-winning building program
