

THE 18TH ANNUAL
READERS
CHOICE

2020's Top Trends, Products and Ideas

2020 is a year many will not regret seeing in their rear-view mirror. Still, this turbulent period has taught us many lessons—or at the least—opened our eyes to issues we must address moving forward. With that, like last year, we present here some of the mega- and sub-trends that informed our lives in this COVID-19 crisis. Actually, those five capital letters say it all, as most of the topics that follow are matters we explored last year—and remain as topical—but are painted, today, in a whole new light, given the pandemic's impact. What are they?

- ▶ Addressing 2030/climate change; including exploring passive house measures.
- ▶ Future-proofing and humanizing our cities, including making them resilient not only to weather, but disease.
- ▶ Future-proofing our well-being, including how we transition to working remote, or simply escape the reality of COVID isolation.
- ▶ Delivering inspiration to provide comfort, if not hope, in these trying times.

—Jim Crockett, editorial director

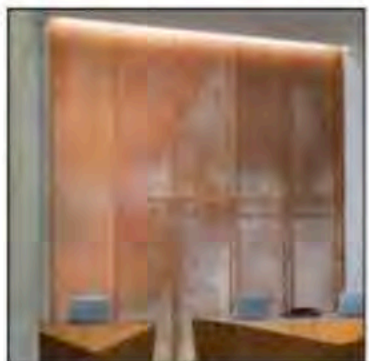


We chose this shot of LA for reasons beyond its photogenic qualities. For one, in the early months of COVID isolation, many Angelinos reported they could see the sky in ways they had never before, due to the almost instant removal of cars from the streets and highways. It's a valid question to consider moving forward—can cities recover with our current transportation systems and priorities? It was among the questions the group Meeting of the Minds recently asked in a webinar—specifically, what do recent transportation trends indicate for urban recovery? Certain cities, it noted, are using this crisis to “center” residents, noting equity, safety and access, will allow them to be more successful compared to other

cities. How do we continue to safely move people to jobs and opportunities in this new era of transportation? What are the policy and planning tools that will make the difference between bouncing back, and surviving, vs. a continued, and prolonged crisis?

Many are exploring this subject, including Danny Harris of Transportation Alternatives (www.transalt.org), and Melinda Hanson of Electric Avenue (www.electricavenue.city), who reimagines “15-minute” cities, where streets serve as pathways for recovery, built around walking, biking and “micro” mobility, ultimately creating more sustainable, equitable and resilient transportation.

DECORATIVE METAL / WALL COVERINGS



Backlit Laser Cut Metal

Móz is lighting things up with its Perforated and Laser Cut Metal products. Lighting makes patterns pop, using shadows to cast patterns, transforming walls and columns into a design element. They are delivered ready-to-install and include LED light strips and drivers along with optional light-diffusing acrylic backers to evenly distribute illumination.

Móz Decorative Metals
Perforated + Laser Cut Metal
www.mozdesigns.com

CIRCLE 397



Woven Wire Mesh

Simultaneously blending in seamlessly while making a bold design statement, “Pre-Crimped” industrial woven wire mesh delivers high strength and durability. Coarse wire from 8 mesh to a 6-in. clear opening, the combinations of wire spacing, crimp style, raw material and wire diameter is nearly limitless.

Banker Wire
Woven Wire Mesh
www.bankerwire.com

CIRCLE 396



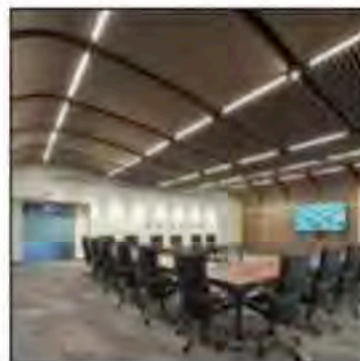
Luxury Meets Utility

Woven metal fabric Omega 1520 graces this Louis Vuitton Shoe Factory / Lab in a small town near Venice, known as the “land of shoes” for its reputation of producing skilled craftsman. Architect Jean-Marc Sandrolini designed the factory wrapped in Metal Fabrics to control the amount of sunlight penetrating the interior and other weather-resistant properties.

GKD Metal Fabrics
Omega 1520
www.gkdmetailfabrics.com

CIRCLE 395

CEILING SYSTEMS

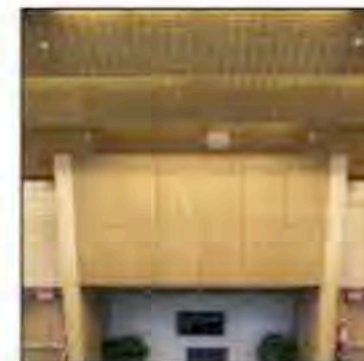


Non-Perforated Visual

Delivering a non-perforated visual with excellent sound absorption, the Micro-perforated WoodWorks ceiling and wall panels feature 0.55 mm perforations that disappear from a normal viewing distance for a NRC performance of up to 0.80 for ceilings. Acoustics surfaces can be flat or curved.

Armstrong World Industries
Microperforated WoodWorks
www.armstrongceilings.com

CIRCLE 394



Sound Control

Aluratone acoustical wood veneered panels feature designs manufactured with various face machining to achieve specific acoustical absorption values. The panels consist of natural wood veneer applied to an engineered substrate with edge banding or custom-edge profiles finished with custom stains, clear sealers or color treatments. Custom sizes are available.

Rulon International
Aluratone
www.rulonco.com

CIRCLE 393



Robust and Stylish

Thermoformed tiles and ceiling panels are unaffected by moisture, are dust-free, lightweight, flexible and long lasting. The company recycles 100% of its scrap and sources raw materials from responsible partners. The material also outperforms mineral fiber ceiling which can break easily, stain, sag and mildew. Pictured are the Alexander, Madison, Circle Star and Doric styles.

Ceilume
Ceiling Tiles
www.ceilume.com

CIRCLE 392



Ordinary Into Extraordinary

Integrating MOZ' signature laser cut and perforated metals, Backlit Metals makes patterns pop and casts shadows onto surfaces, transforming ordinary walls, ceilings and structural columns into unique design elements, allowing a reimagining of what a strong surface can look like for both interiors and exteriors. Ready to install, including LED light strips and drivers along with optional light-diffusing acrylic backers. Alongside a wide range of lighting solutions to perforated and laser cut metals, the Column Cover Systems can also be backlit to glow in an evenly dispersed pattern, or illuminated from lighting at the base, creating a welcoming focal point.

Suitable for a variety of projects, from the office, to hospitality and retail, the product can be paired with Key-Slot Wall System for walls. The open bracket mounting system creates clearance to effortlessly integrate lighting by positioning LED lights from above, below and behind so light can travel between the panels. The Backlit Metal Solutions offers 27 laser cut, five perforated and endless custom patterns. Interior and exterior designs available.

JUDGE'S COMMENTS:

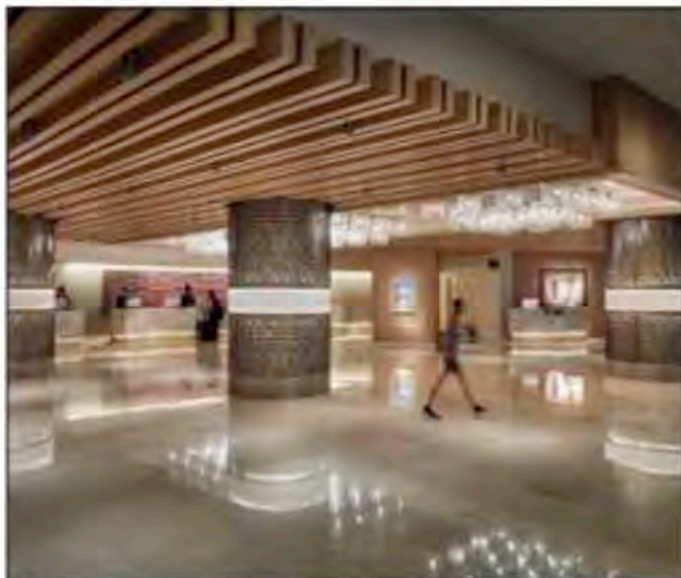
"It's tempting for manufacturers to say, 'the possibilities are endless' — as evidenced when so many do. But, in this instance, MOZ Designs Backlit Panels live up to that billing."

MOZ

Backlit Metals

www.mozdesigns.com

CIRCLE 341



1 Pure + FreeForm



2 GKD Metal Fabrics



Decorative Metal

1 GREAT FIT

The Super Metal Future collection of finished aluminum skins for interior and exterior walls and ceilings comes in flat sheets and can be used in a variety of applications, including millwork, column covers, soffits and signage. Fully customizable, designers can create a site-specific look. Available in 12 finishes, with great attention paid to textures, reflection and luminosity.

JUDGE'S COMMENT: "Love the fact it's bringing the look and feel of premium surfaces to a most suitable substrate."

Pure + FreeForm

Super Metal Future

www.purefreeform.com

CIRCLE 340

2 METAL MAGIC

With the same properties of stainless steel, GKD's Bronze Collection offers an alternate aesthetic for exterior and interior settings. Architects have the option of maintaining the warm bronze tone with a clear coating or allowing its natural patina to evolve over time.

JUDGE'S COMMENT: "The Bronze Collection succeeds on many levels proving the important collaboration between manufacturer, specifier and builder."

GKD Metal Fabrics

The Bronze Collection

www.gkdmetalfabrics.com

CIRCLE 339

Architectural SSL Magazine

PIA'20

product innovation award



BACKLIT LASER CUT METAL SOLUTIONS

Architectural Metals for Exterior Facades, Columns, and Walls

mozdesigns.com | 510.632.0853 | Oakland, CA

