

# Móz Dividers: Cables

## Technical Information



Móz Dividers provide both form and function—allowing us to reimagine open floor plans into safe, separate spaces, without the loss of human connection or the need for costly structural changes.

Our Divider Solutions are offered in a variety of signature material options.

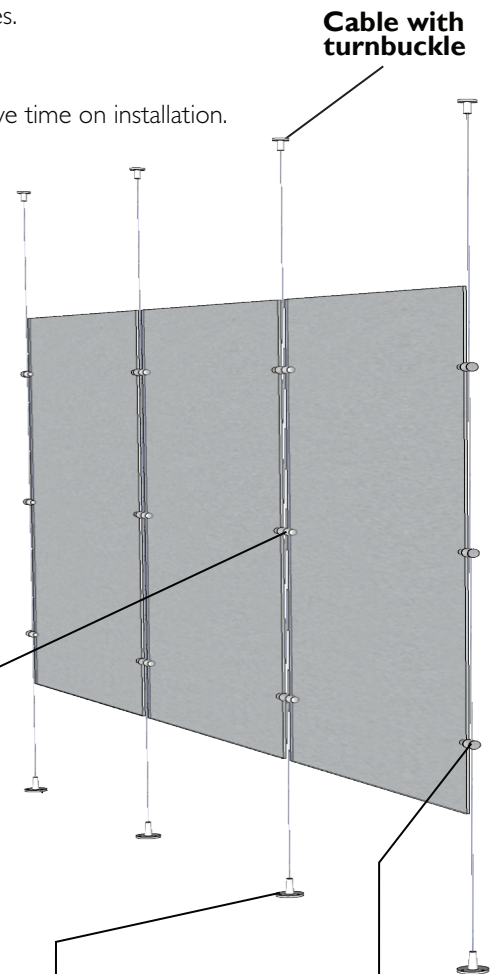
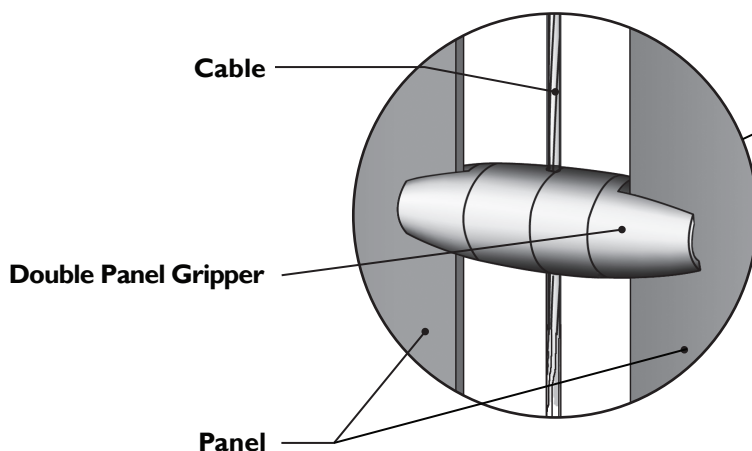
Each solution delivers ready to install; all panels and hardware are included to help save time on installation.

### STANDARD FEATURES

- Standard panel size 3' x 5' or 3' x 8'
- Standard 3-panel kits available in 5' and 8' panel heights. Each panel is 3' wide and double-sided
- Includes all attachments - Cables, grippers and turnbuckles for affixing floor to ceiling

### MATERIAL OPTIONS

- Solid .090" aluminum (up to 3/16")
- Perforated .090" aluminum with solid margins (up to 3/16")
- Laser Cut 3/16" aluminum
- Engravings 1/8" aluminum (up to 3/16")



### HARDWARE INCLUDED

#### Stainless Steel Aircraft Cables

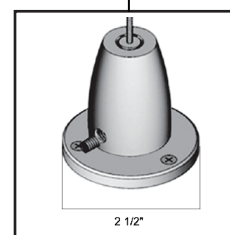
- Floor/ceiling or top/bottom of opening in wall
- 10' max height recommended to minimize movement
- 2-1/2" Turnbuckle at floor/ceiling

#### Panel Gripper

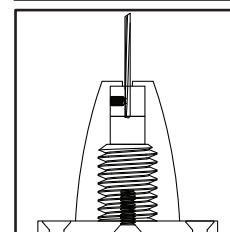
- Satin Aluminum finish, can be painted to match
- Can hold up to 1/4" material
- 3'x5' or 3'x8' panels require 6 grippers per panel
- Larger panels may require more grippers or thicker material
- Cables may allow the panels to have slight movement, for a more rigid installation consider our Post Dividers instead

### OPTIONAL ADD-ONS

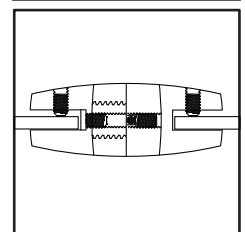
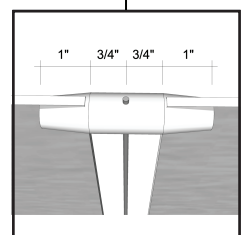
- Add-on panels in 5' and 8' heights
- Custom Colors and Sizes (max 4'x8' panel size)
- Curved panel options



Turnbuckle



Gripper



rev. 07/2022