



Engravings Collection

DESIGN GUIDE

- [PRODUCT DESCRIPTION](#)
- [FEATURES AND BENEFITS](#)
- [SPECIFICATIONS](#)
- [PATTERNS](#)
- [STANDARD COLORS](#)
- [DESIGN CONSIDERATIONS](#)
- [SAMPLING](#)
- [STOCK AND AVAILABILITY](#)
- [SUSTAINABILITY](#)
- [HANDLING, CARE, AND CLEANING INSTRUCTIONS](#)
- [GENERAL WARRANTY](#)

PRODUCT DESCRIPTION

The Engraving Collection brings a subtle beauty with the help of CNC machining lending itself to a wide range of applications and environments. This sophisticated product brings a new layer of dimension, texture and visual interest to metal.

FEATURES AND BENEFITS

- 19 standard patterns
- Over 20 standard powder color options (suitable for interior/exterior applications)
- custom patterns and finishes available
- cost effective and decorative feature
- easy to specify
- easy to install

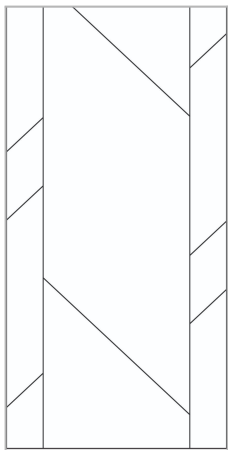
SPECIFICATIONS

Material	.090" (2.28 mm) solid core Aluminum ASTM B209 weighing roughly 1.3 lb/ft2 Custom .125" (3.17 mm) thickness also available. Not available on stainless steel.
Panel Sizes	4' x 8' (1.2 m x 2.4 m) and 4' x 10' (1.2 m x 3.0 m.) Panel squareness is subject to a 3/16" (4.7 mm) tolerance.
Finishes	Powder Coat Colors offering superior scratch resistance for interior/exterior applications. Also available in Moz Classic, Gradient, Blendz/Patina and Digital/Graphix color options with a low VOC compliant polyurethane finish. Custom Colors are also available.

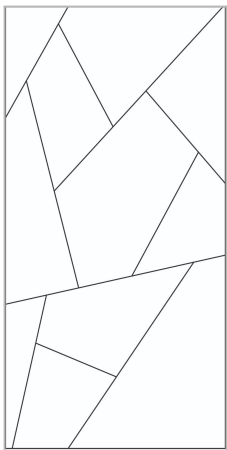
PATTERNS

Available in 19 standard patterns with custom modifications and patterns available. Click on pattern names below to jump to a detail page for each pattern,

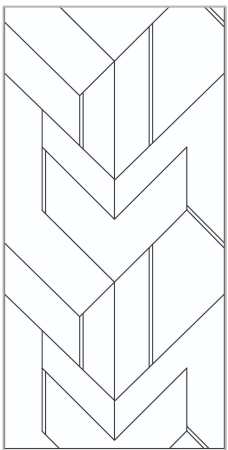
* Select patterns come in a series - view pattern pages for more details.



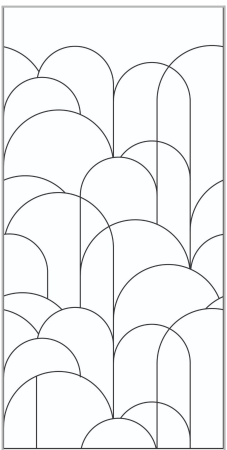
[Parallel Series*](#)



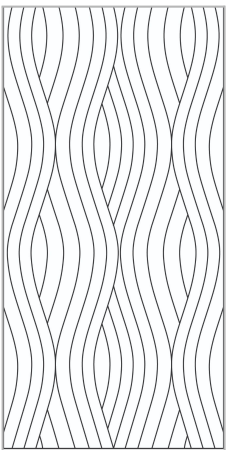
[Fractured Series*](#)



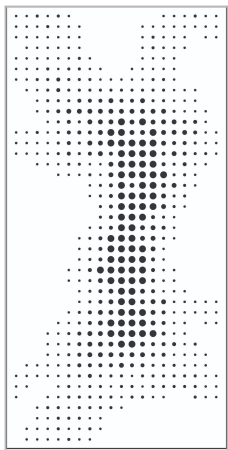
[Merge](#)



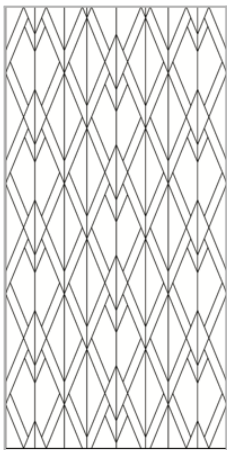
[Uprise](#)



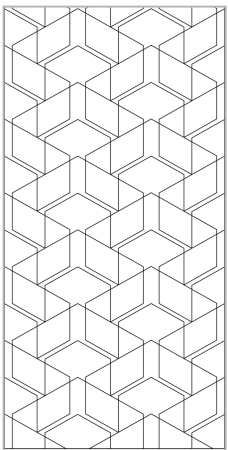
[Tangle](#)



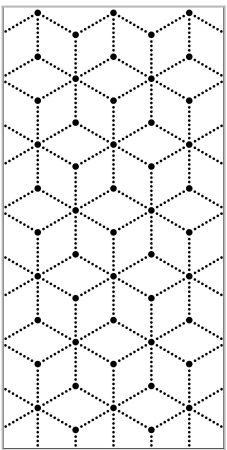
[Particle Series*](#)



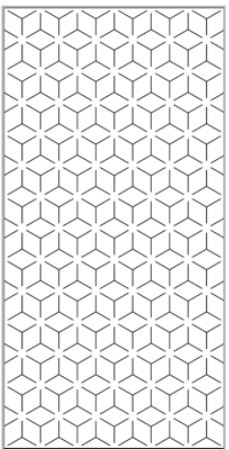
[Apex](#)



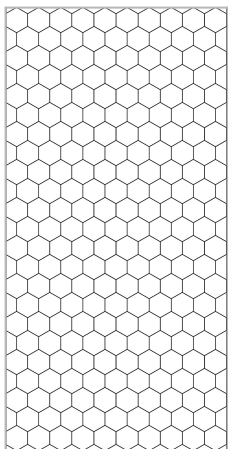
[Voyage](#)



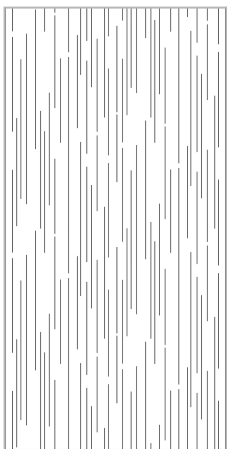
[Cubella](#)



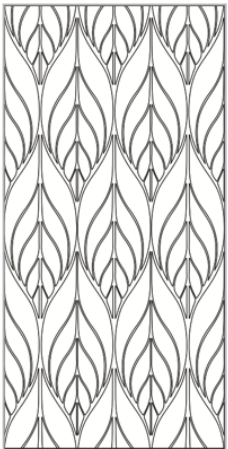
[Maze](#)



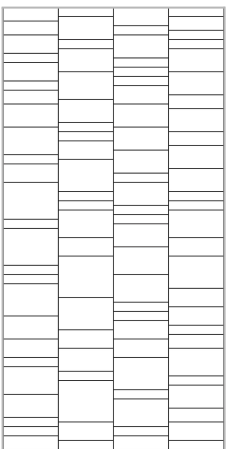
[Hive](#)



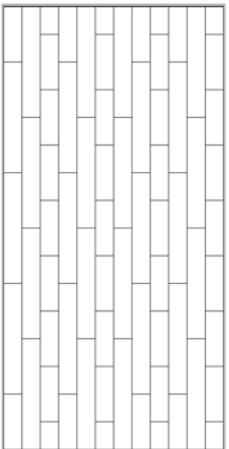
[Dash](#)



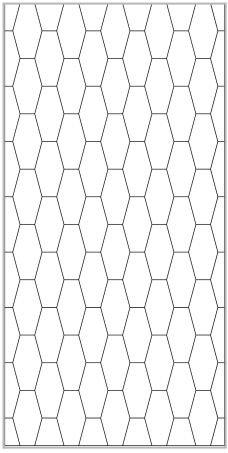
[Nouveau](#)



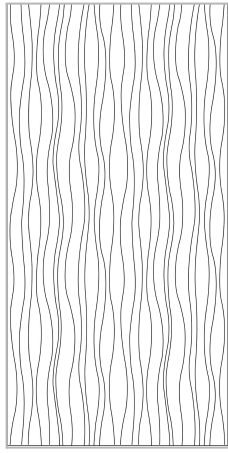
[Crossroads](#)



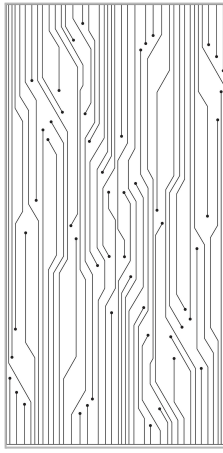
[Mason](#)



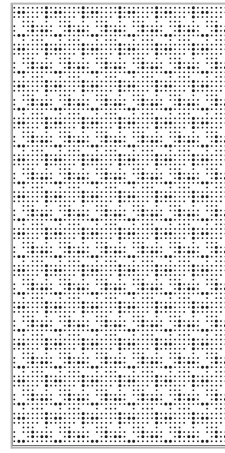
[Links](#)



[Current](#)



[Circuit](#)



[Matrix](#)

STANDARD COLORS

Over 20 standard powder coat colors in a variety of smooth, textured, metallic or gloss finishes suitable for interior and exterior applications with a 5yr exterior warranty. Ask about our Ultra Durable Exterior finishes offering a 10 to 20 year warranty.

Also available in select Móz Classic, Blendz/Patina, and Gradient Collections with hand-crafted grains, Custom colors also available. Visit our [website](#) for a complete list of pattern and color options.



Black Sand



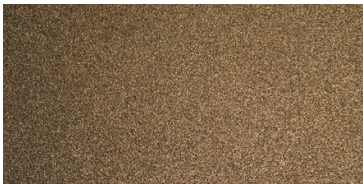
Black Matte



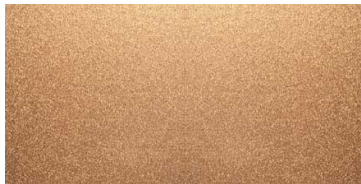
Rust



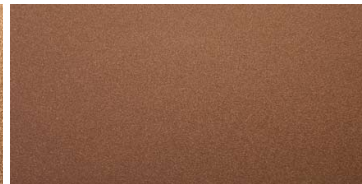
Cognac



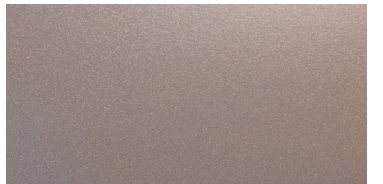
Bronze Sand



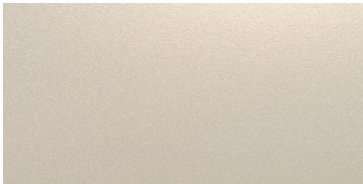
Copper Metallic



Rusted Copper



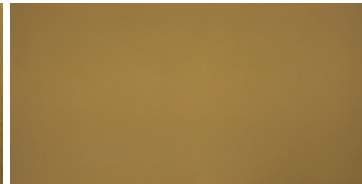
Metallic Rose



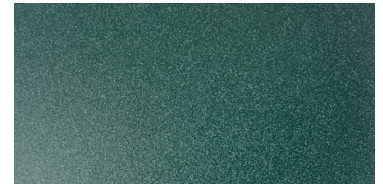
Cream Metallic



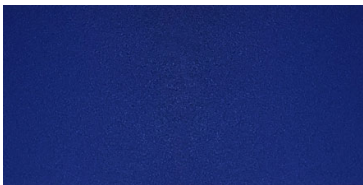
Gold Metallic



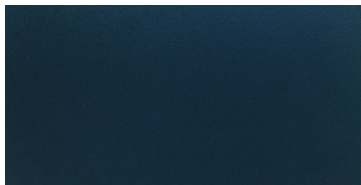
Sahara Gold



Emerald Sand



Cobalt Sand



Blue Pearl Metallic



Midnight Blue



Steel Grey



DESIGN CONSIDERATIONS

Pattern Matching from panel to panel

Most patterns are continuous and match on all four sides while others match better on one side only. See pages at the end of this guide for an overview of each pattern in regards to pattern matching. Please note the alignment tolerance is $\frac{1}{8}$ ". For help with alignment at seems consider incorporating a small gap reveal between panels to minimize the look. If you need help creating a continuous pattern for your project just contact us for assistance.

Engraved Silver lines vs painted lines

Engravings are made from a cnc router bit cutting into the surface of the aluminum. Typically we paint *after* engraving which produces a painted line (see image.) Painted lines always match the panel color, we cannot provide painted lines in additional colors at this time.

For added contrast on select patterns and colors, we can paint *before* we engrave which exposes the aluminum and produces a silver line (see image.) With silver lines some tool marks will be visible and is inherent to the look of the material. Silver lines are not available on powder coat colors or the following patterns: Apex, Cubella, Dash, Fractured, Matrix, Maze, Nouveau, Particle, Uprise, and Voyage. Contact us for pricing on this premium option.

In both cases, we always apply a protective top finish/sheen to seal and protect the metal.



PAINTED LINES



SILVER LINES

Custom Design Options

For custom patterns, please submit a vector image preferably an .ai, .eps or .dxf file. to scale. The following line thicknesses are available for most of the designs. $\frac{1}{8}$ ", $\frac{1}{4}$ ", $\frac{3}{16}$ ", $\frac{3}{8}$ ", $\frac{1}{2}$ ". Please note engraved lines $\frac{3}{8}$ " and thicker may create vibration marks from cutting - these marks can be covered by a powder coat finish. Contact the design department for more information.

SAMPLING

Samples are made from .090" aluminum in 3.5" x 5" size. Due to the large pattern scale samples are often scaled down. Additional samples may be sent to show both color and pattern if an exact sample is not available at the time of order. If you would like to request samples, please visit our [Sample Request Form](#) online.

STOCK AND AVAILABILITY

Our products are made to order and take approximately 3-4 weeks to manufacture. Larger and more complex orders may take longer.

SUSTAINABILITY

Móz Metals are proudly Made in the USA. We provide domestically sourced materials which are manufactured from our solar powered factory in Oakland California. Móz Metals can contribute to LEED credits. To learn more visit mozdesigns.com/sustainability.

HANDLING, CARE, AND CLEANING INSTRUCTIONS

Cutting Instructions

When cutting is complete, thoroughly clean all cut edges with dry cloth. Sand rough edges with 220 grit sandpaper before removing PVC coating. For all cutting methods, a test cut is always recommended.

CNC Cutting - Use a Zero-flute up-cut onsrud bit if available (like series 63-600) or similar carbide bit. A .1"(63-622) diameter bit should be sufficient for all Moz laminates up to an .090" sheet. For thicker gauge (.125") cut through in two passes (.1" / EACH PASS). Do not use lubricant of any kind on Moz finished product. Cut Moz products only on an unused spoil-board. Use 18,000 RPM and travel no faster than 75 IPM (inches per minute) when cutting. Cut in "climb direction" on finished parts.

Sawing (table & panel saw) - Always use sharp carbide tip blades with 80 to 100*teeth. Blade should be 8" to 12" in diameter, and at 0 degree rake for best results. It is always best to cut into the decorative face with the blade to minimize burring and edge distortion. Do not force material through saw. A constant feed rate will produce smoother cuts. Blade wax will promote better cuts. Shearing Blades must be clean, sharp and properly maintained. Due to pressure, one side will always chip. To avoid chipping take special attention to placement of decorative metal face as follows: for chip free cut to material on operator side feed thru decorative face down. for chip free cut to material on drop side feed thru decorative face up

Installation Instructions

The Engravings line should be applied using a panel adhesive unless the bottom lip is resting on a surface (i.e. floor, baseboard). Always check with your adhesive supplier to make sure the adhesive you have selected is suitable for the application. In all cases, the adhesive manufacturer's instructions should be followed as to the use of the adhesive and substrate preparation. Overhead installation will need to be hardware fastened. Móz metals are not post-formable beyond their natural tolerance. Our Engravings panels are substantially thicker than our other .040" metals and will not flex as easily. All bending/forming must be done by the factory prior to application of Móz colors and patterns.

Panels should be maintained at a constant temperature range of 65°F to 85°F (18°C to 24°C), with stable relative humidity, for at least 48 hours prior to, throughout the installation period and maintained consistently thereafter.

Installation locations must be enclosed, weatherproofed and climate controlled prior to commencing installation. Do not install if relative humidity is greater than 80%.

Cleaning Instructions

For GENERAL CLEANING, use a damp, soft cloth with mild, non-abrasive soap and water. For HEAVY CLEANING and removal of grease, use oil based mineral spirits or naphtha. Low concentration ammonia based cleaning agents such as glass cleaners may also be used. A soft brush may be used to clean grooves of engraving channels. A complete guide to cleaning can be found [here](#) for our powder coated metals or [here](#) for our polycoat finished metals..

GENERAL WARRANTY

Due to the production process, no two sheets are exactly alike. Some surface irregularities as well as color and pattern variations will appear. We recommend that you inspect the material before cutting or mounting by simply lifting up the edge of the protective mask and laying it back down. If any material proves to be defective, Móz Designs will be liable for the cost of that material only. In order to prove material defective a sample must be provided to Móz Designs for review. No other warranty is expressed or implied.

PARTICLE PATTERN

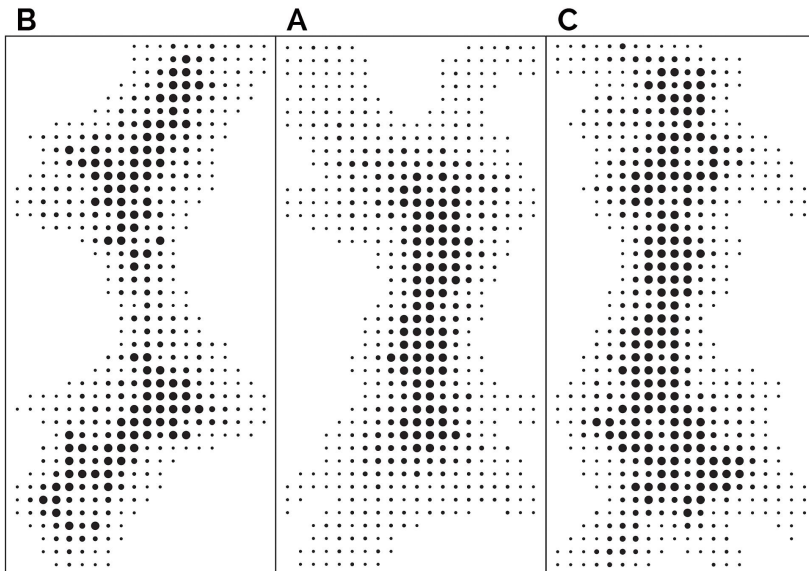
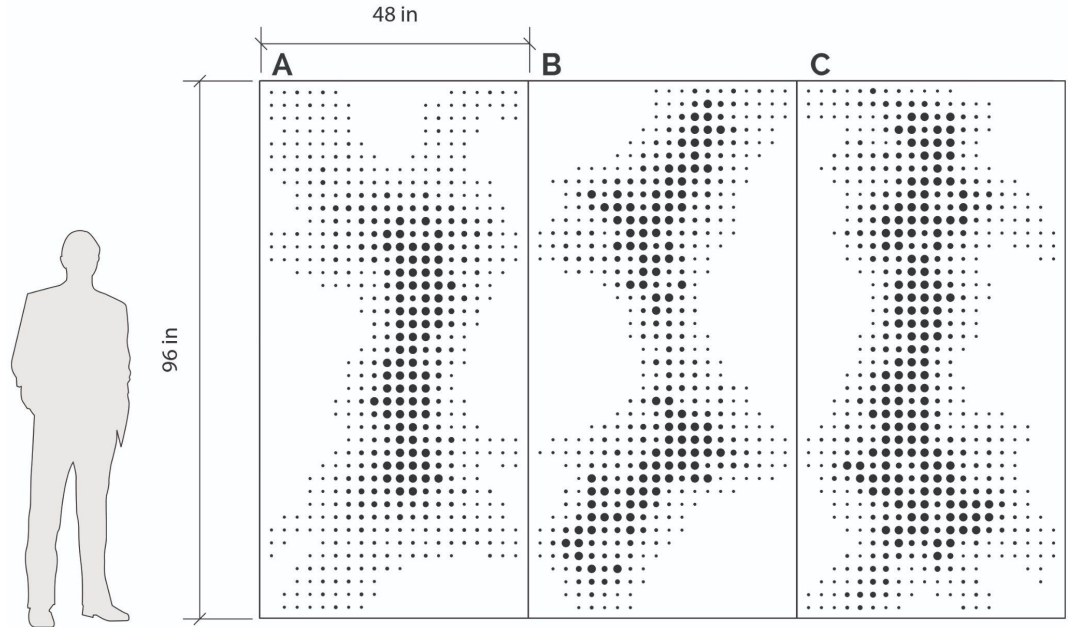
[< BACK TO PATTERNS](#)

Pattern Repeat: 4'X8' or 4'X10'

Engraved circles range from 0.32" to 1.27" diameters and are always painted - silver circles not an option.

Pattern will match on long sides

[> view standard color options](#)



This pattern comes in a SERIES of three designs A, B, and C which are interchangeable to create a more unique look for large scale projects.

POSSIBLE CONFIGURATIONS

Specify 'Particle A' to repeat
or 'Particle Series' (panels A, B, & C)
for more movement.

Contact us for design assistance!

FRACTURED PATTERN

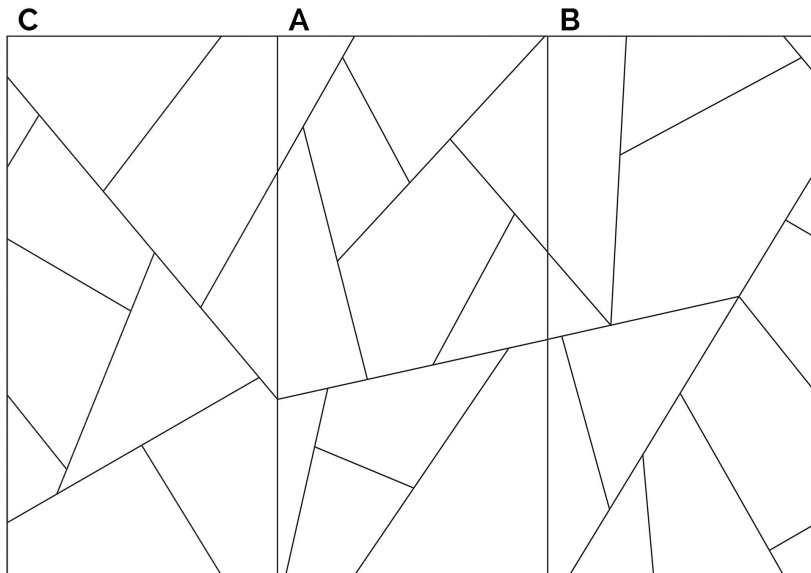
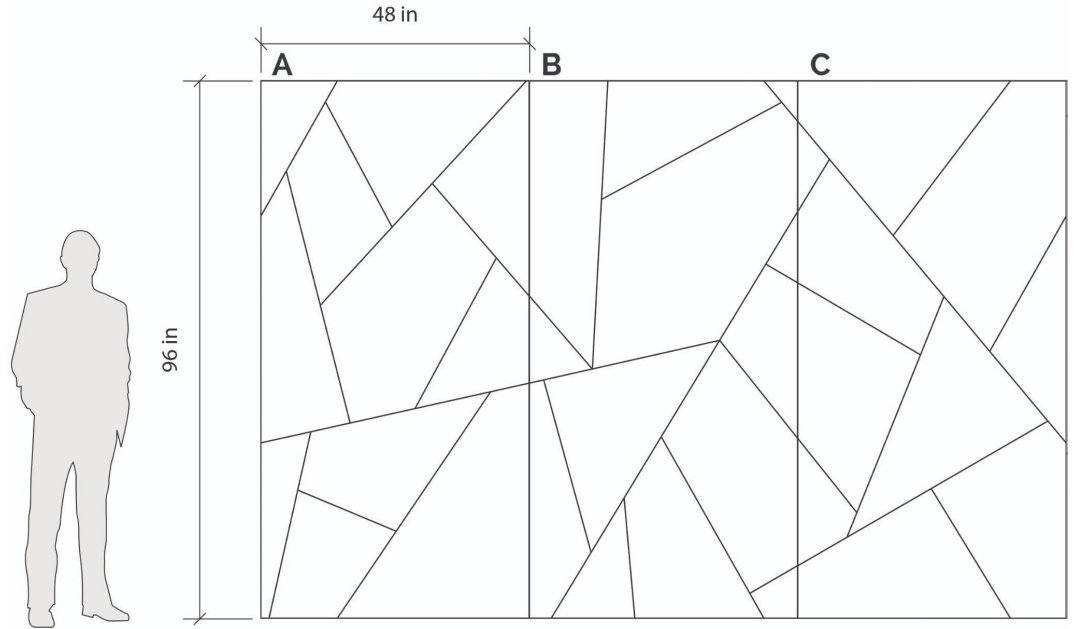
[< BACK TO PATTERNS](#)

Pattern Repeat: 4'X8' or 4'X10'

Engraved lines are 3/8" and always painted (silver lines not an option)

Pattern will match on long sides.

[> view standard color options](#)



This pattern comes in a SERIES of three designs A, B, and C which are interchangeable to create a more unique look for large scale projects.

POSSIBLE CONFIGURATIONS

Specify 'Fractured A' to repeat or 'Fractured Series' (panels A, B, & C) for more movement.

Contact us for design assistance!

PARALLEL PATTERN

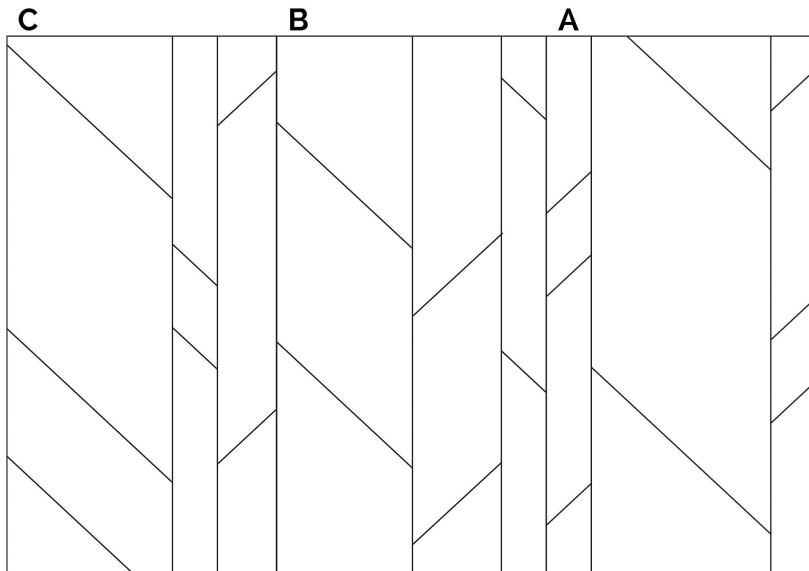
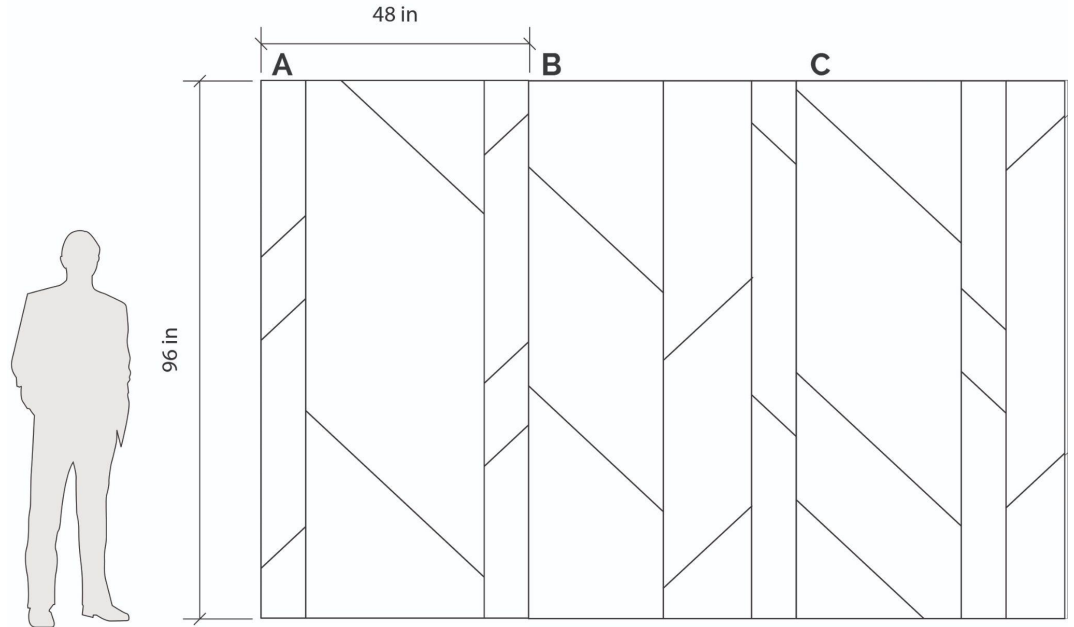
[< BACK TO PATTERNS](#)

Pattern Repeat: 4'X8' or 4'X10'

Engraved lines are 1/2" (silver lines are a premium option – not available in powder colors)

Pattern will match on long sides.

[> view standard color options](#)



This pattern comes in a SERIES of three designs A, B, and C which are interchangeable to create a more unique look for large scale projects.

POSSIBLE CONFIGURATIONS

Specify 'Parallel A' to repeat
or 'Parallel Series' (panels A, B, & C)
for more movement.

Contact us for design assistance!

MERGE

PATTERN

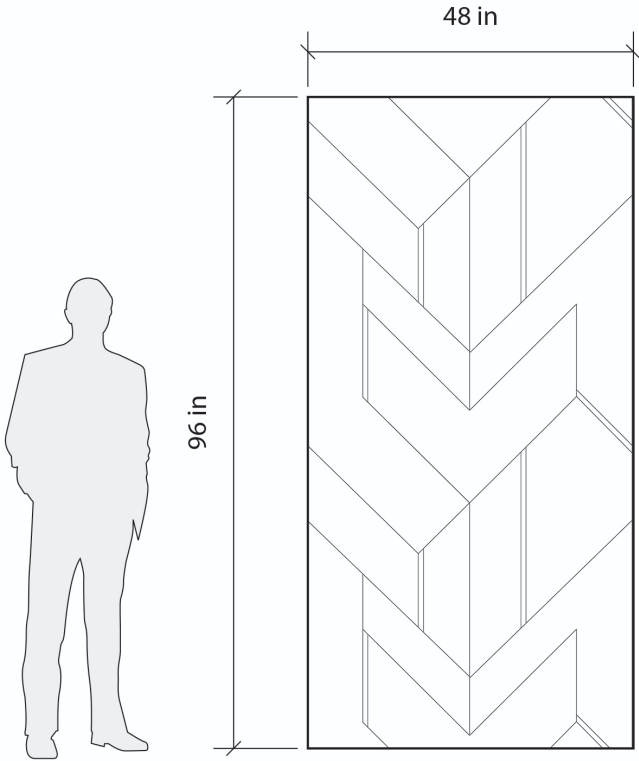
[< BACK TO PATTERNS](#)

Pattern Repeat: 4'X8' or 4'X10'

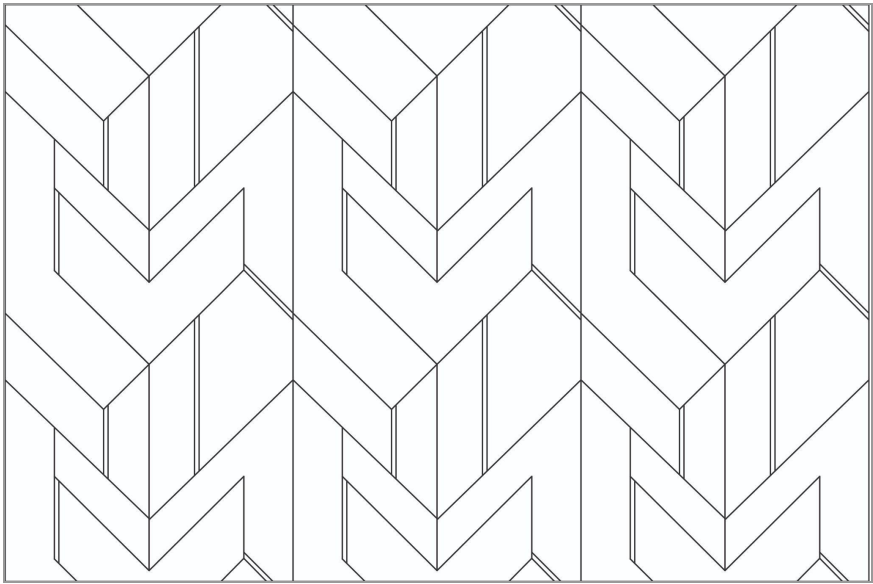
Engraved lines are 1/4" (silver lines are a premium option – not available in powder colors)

Pattern will match on all sides.

[> view standard color options](#)



3-PANEL REPEAT



TANGLE PATTERN

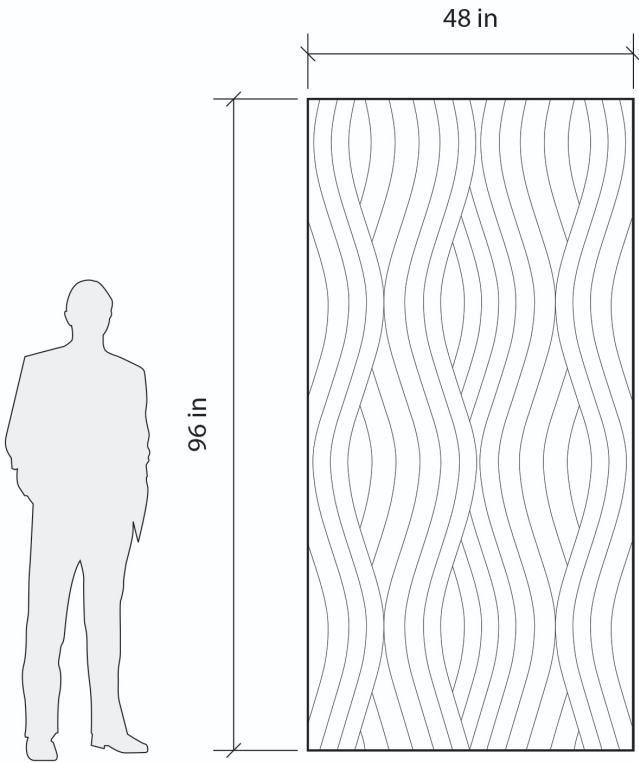
[< BACK TO PATTERNS](#)

Pattern Repeat: 4'X8' or 4'X10'

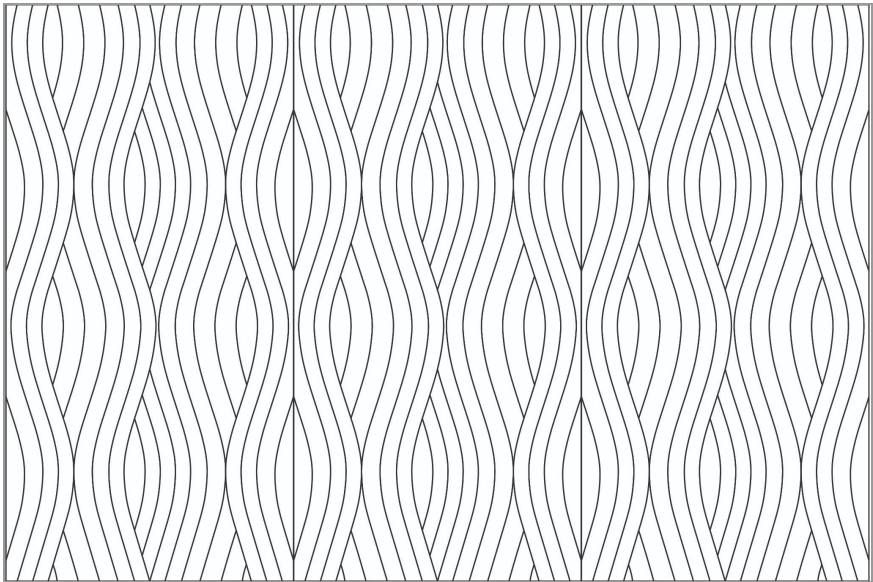
Engraved lines are 3/16" (silver lines are a premium option – not available in powder colors)

Pattern will match on all sides.

[> view standard color options](#)



3-PANEL REPEAT



UPRISE PATTERN

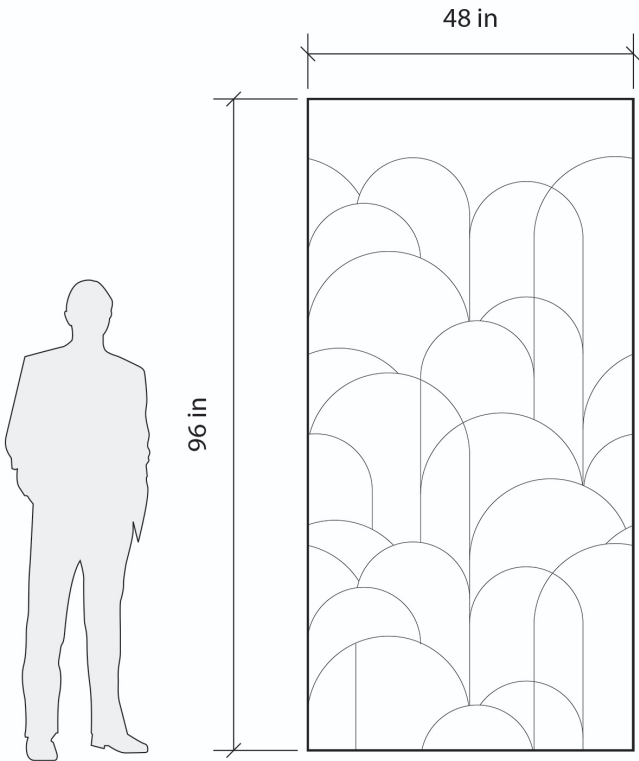
[< BACK TO PATTERNS](#)

Pattern Repeat: 4'X8' or 4'X10'

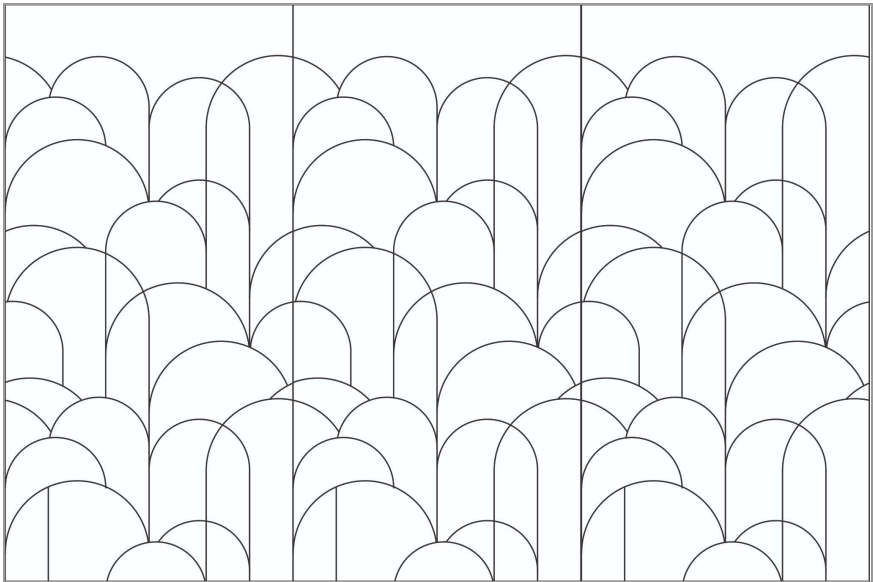
Engraved lines are 3/8" and always painted (silver lines not an option)

Pattern will match on long sides.

[> view standard color options](#)



3-PANEL REPEAT



APEX PATTERN

[< BACK TO PATTERNS](#)

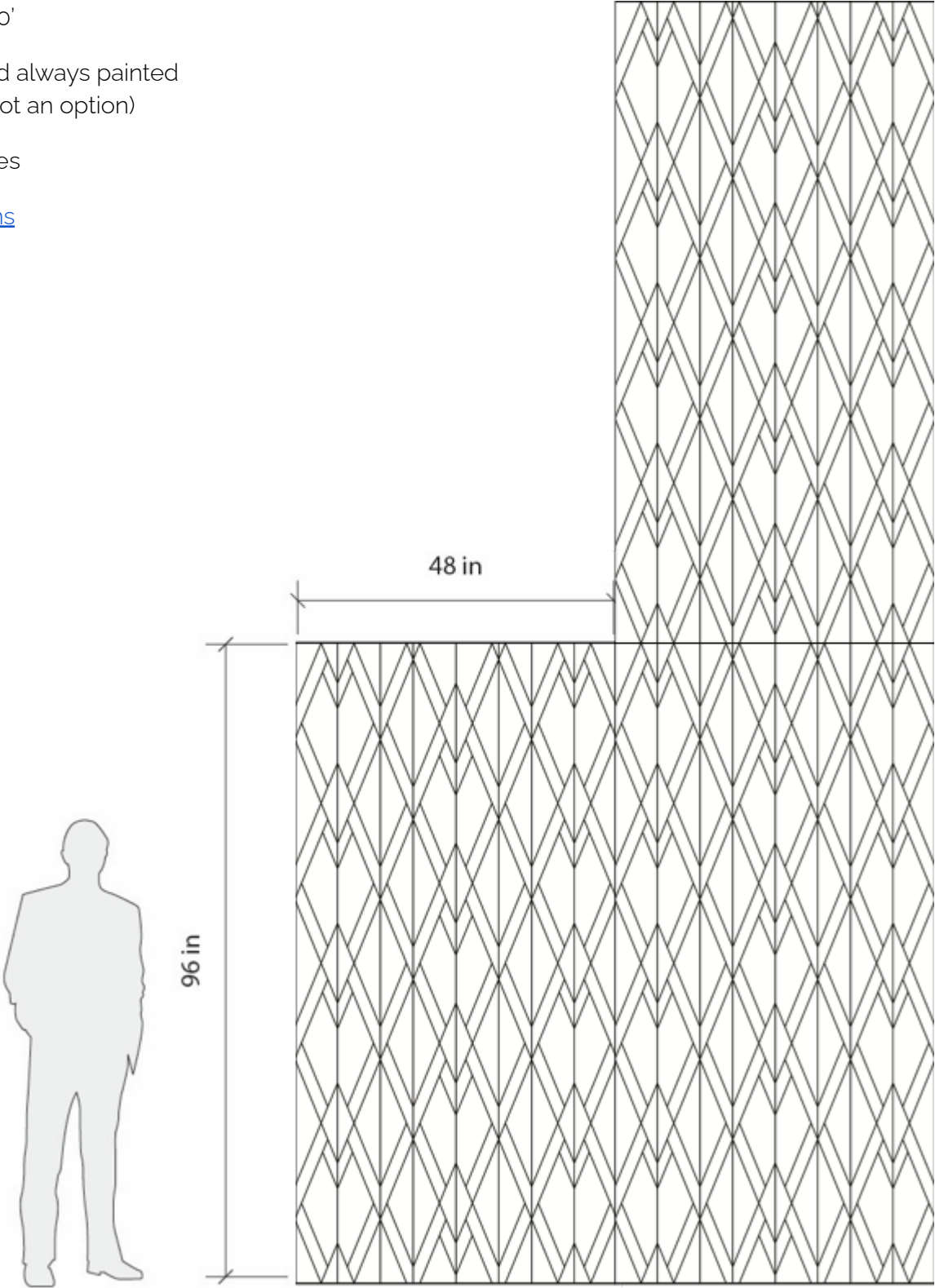
Pattern Style: Geometric and Linear

Pattern Repeat: 4'X8' or 4'X10'

Engraved lines are 3/16" and always painted for this pattern (silver lines not an option)

Pattern will match on all sides

[> view standard color options](#)



VOYAGE PATTERN

[< BACK TO PATTERNS](#)

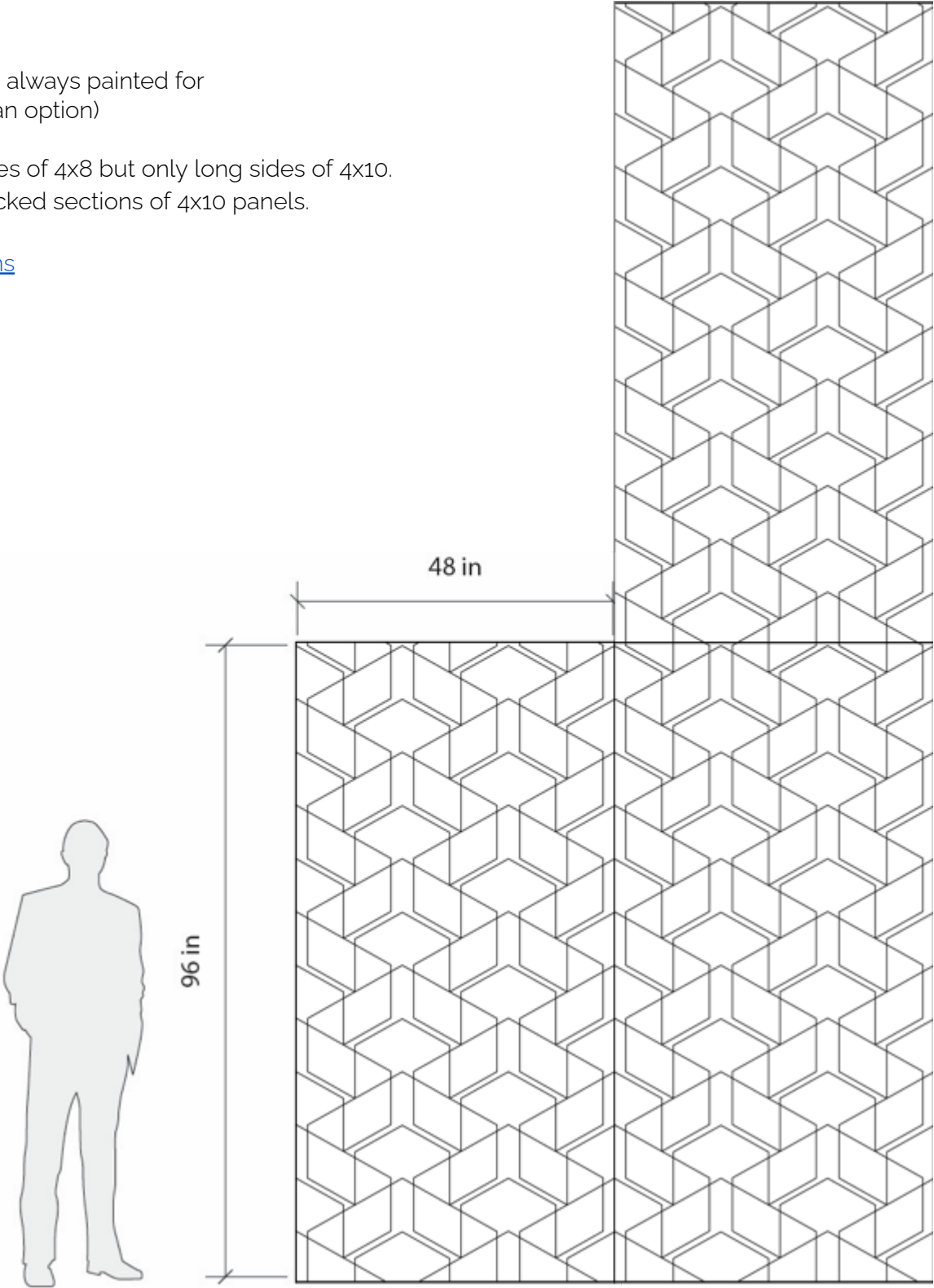
Pattern Style: Geometric

Pattern Repeat: 32" X 16"

Engraved lines are 3/8" and always painted for this pattern (silver lines not an option)

Pattern will match on all sides of 4x8 but only long sides of 4x10.
Contact us for help with stacked sections of 4x10 panels.

[> view standard color options](#)



CUBELLA PATTERN

[< BACK TO PATTERNS](#)

Pattern Style: Geometric

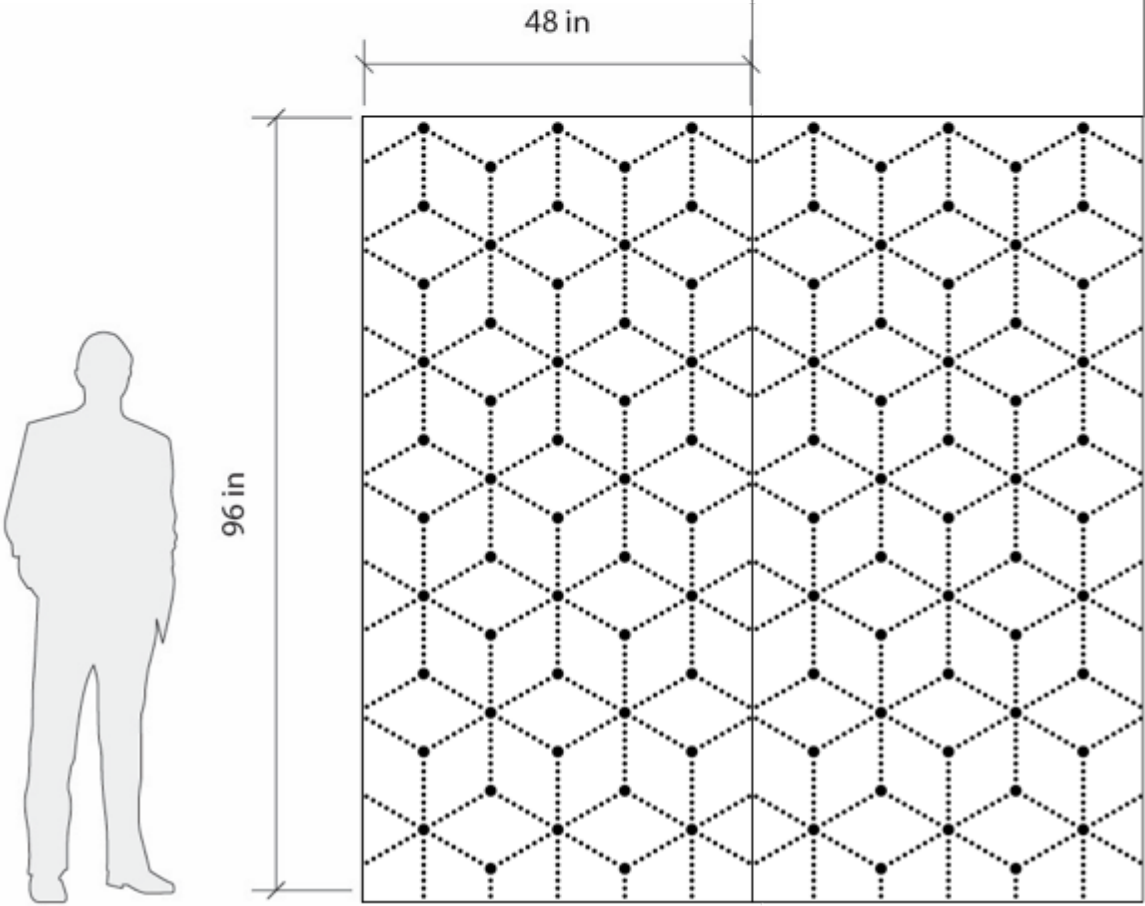
Pattern Repeat: 4'X8' and 4'X10'

Engraved circles are ½" and 1-¼" diameters and are always painted - silver circles not an option.

Pattern will match on long sides only.

[> view standard color options](#)

Contact us
for help with stacked
sections



MAZE PATTERN

[< BACK TO PATTERNS](#)

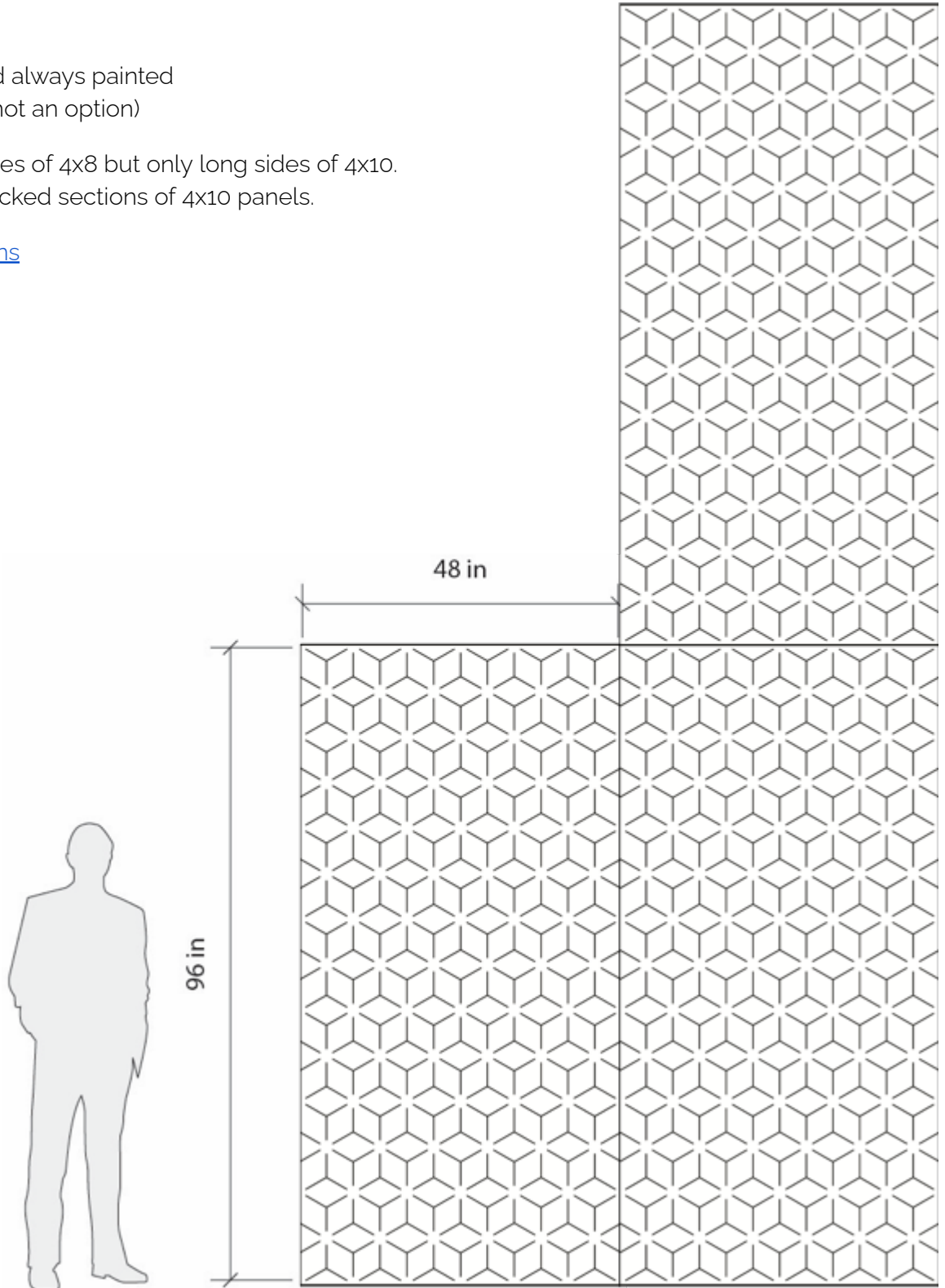
Pattern Style: Geometric

Pattern Repeat: 4'x8'

Engraved lines are 3/8" and always painted for this pattern (silver lines not an option)

Pattern will match on all sides of 4x8 but only long sides of 4x10.
Contact us for help with stacked sections of 4x10 panels.

[> view standard color options](#)



HIVE PATTERN

[< BACK TO PATTERNS](#)

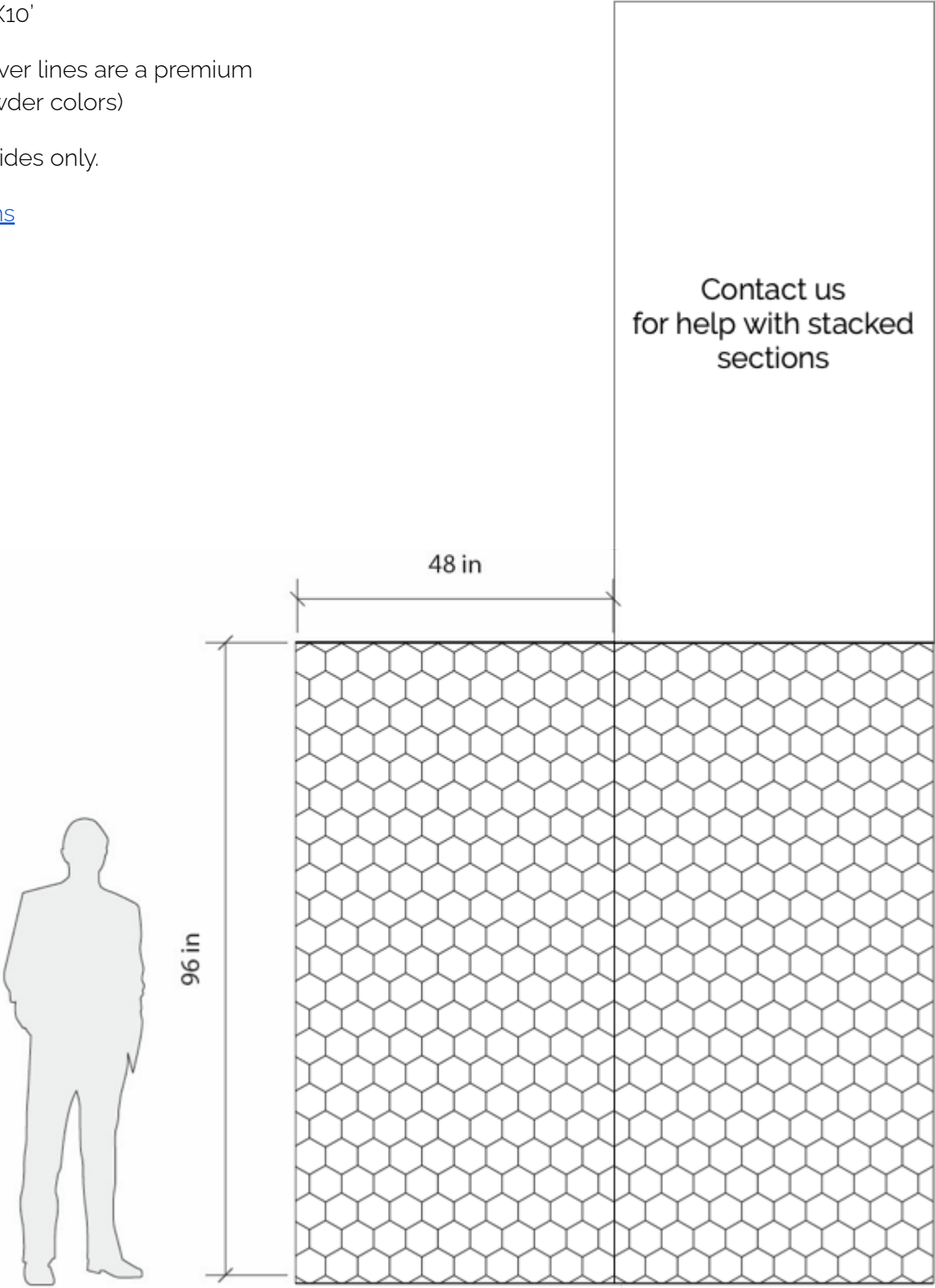
Pattern Style: Geometric

Pattern Repeat: 4'X8' and 4'X10'

Engraved lines are 3/16" (silver lines are a premium option – not available in powder colors)

Pattern will match on long sides only.

[> view standard color options](#)



DASH PATTERN

[< BACK TO PATTERNS](#)

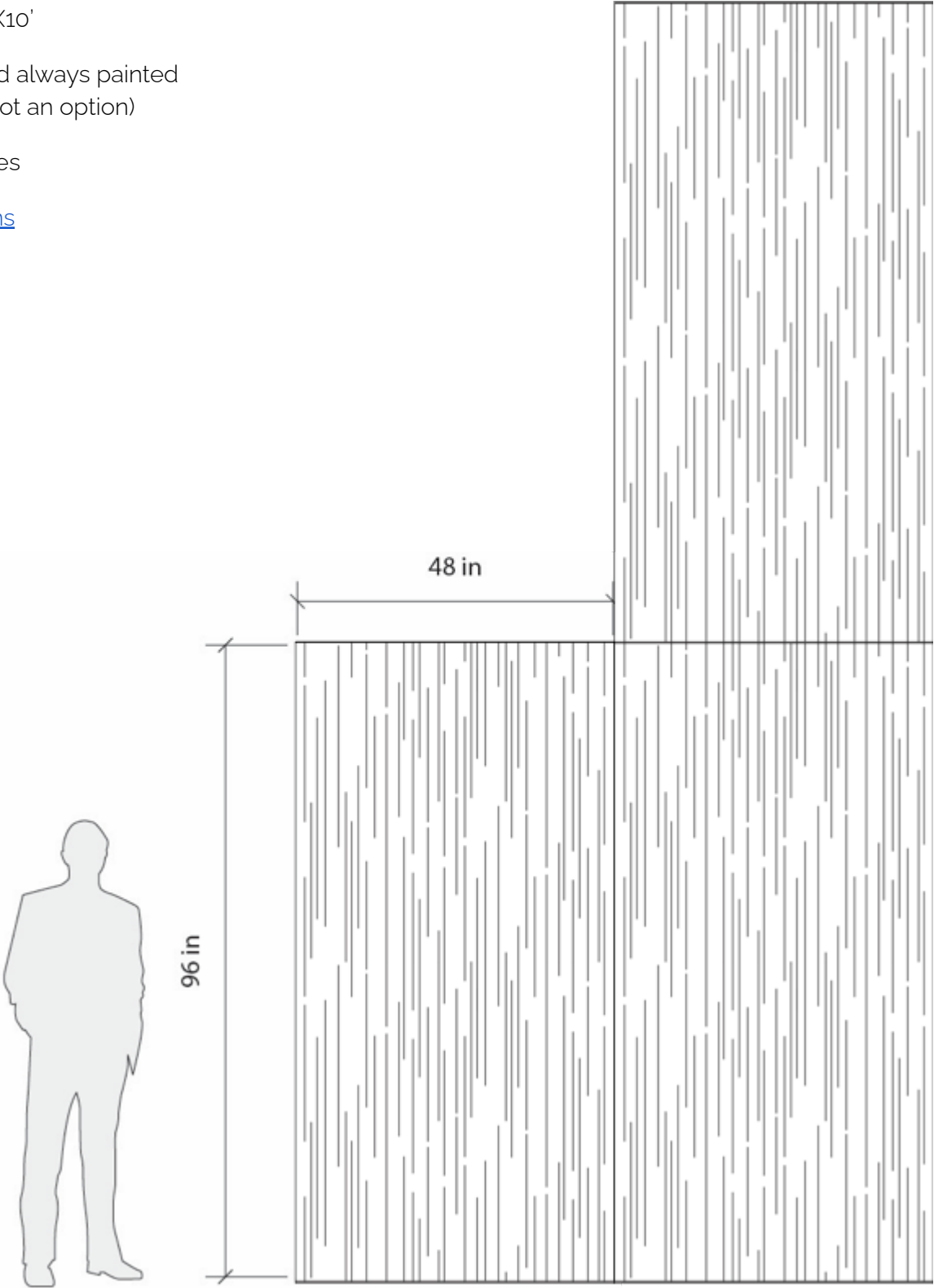
Pattern Style: Linear

Pattern Repeat: 4'X8' and 4'X10'

Engraved lines are 3/16" and always painted for this pattern (silver lines not an option)

Pattern will match on all sides

[> view standard color options](#)



NOUVEAU PATTERN

[< BACK TO PATTERNS](#)

Pattern Style: Organic

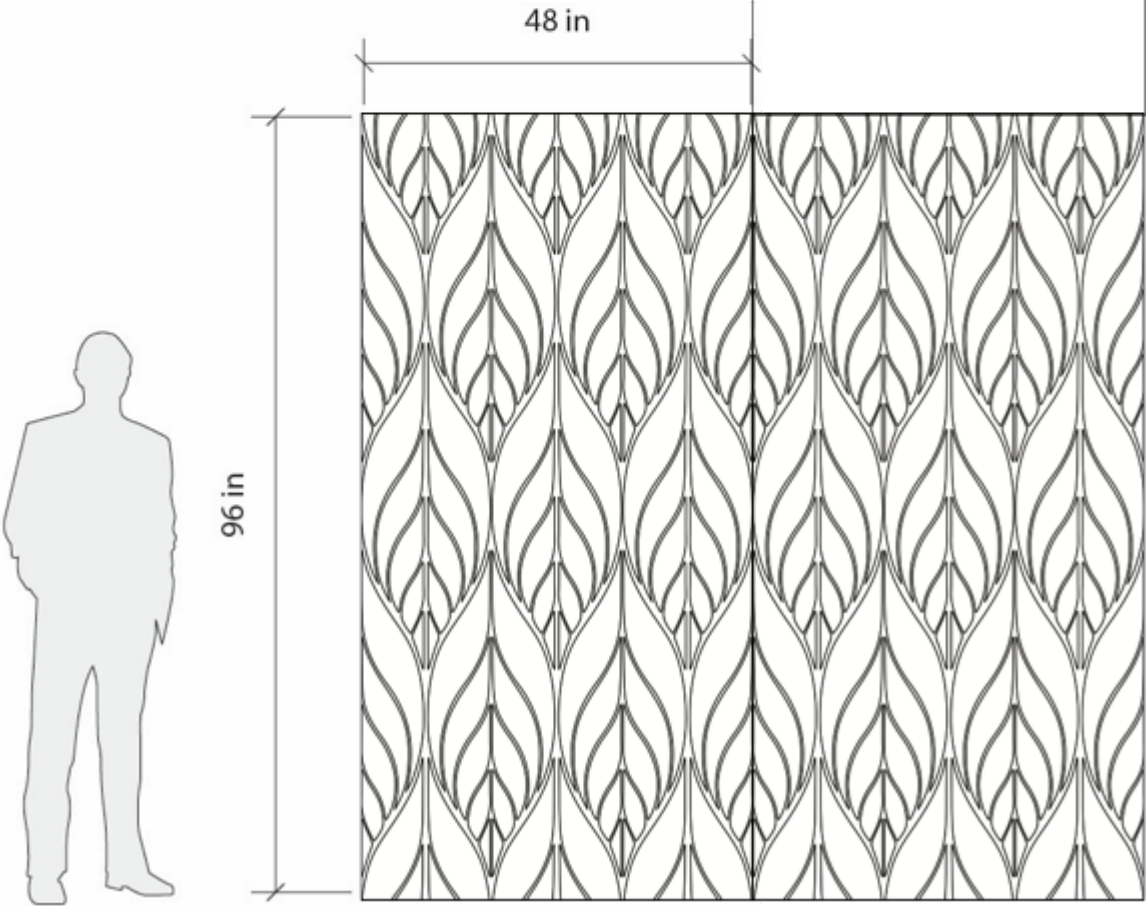
Pattern Repeat: 48" x 50"

Line Thickness: 1/8" and always painted for this pattern (silver lines not an option)

Pattern will match on long sides only.

[> view standard color options](#)

Contact us
for help with stacked
sections



CROSSROADS PATTERN

[< BACK TO PATTERNS](#)

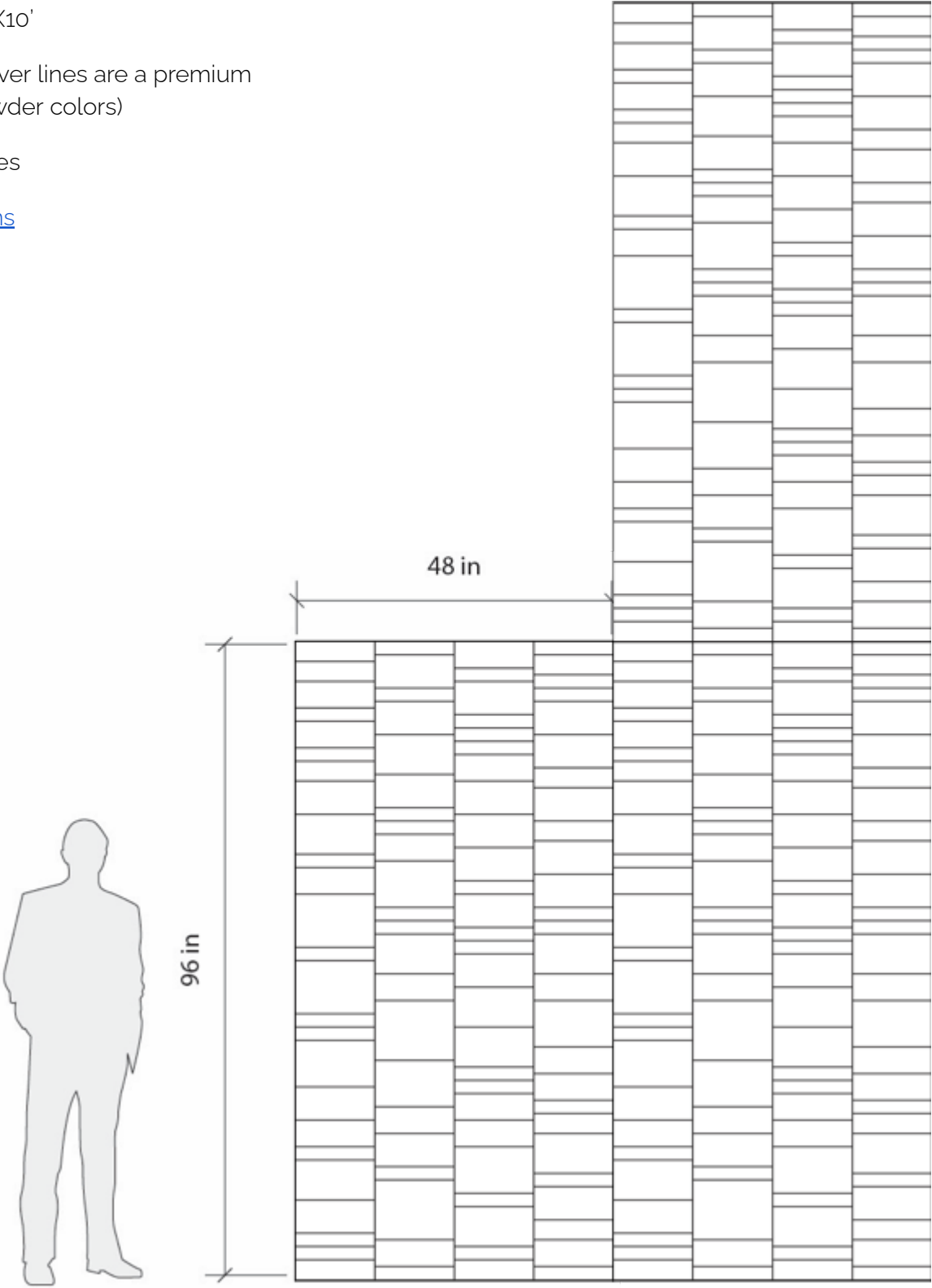
Pattern Style: Geometric, Linear

Pattern Repeat: 4'X8' and 4'X10'

Engraved lines are 3/16" (silver lines are a premium option – not available in powder colors)

Pattern will match on all sides

[> view standard color options](#)



MASON PATTERN

[< BACK TO PATTERNS](#)

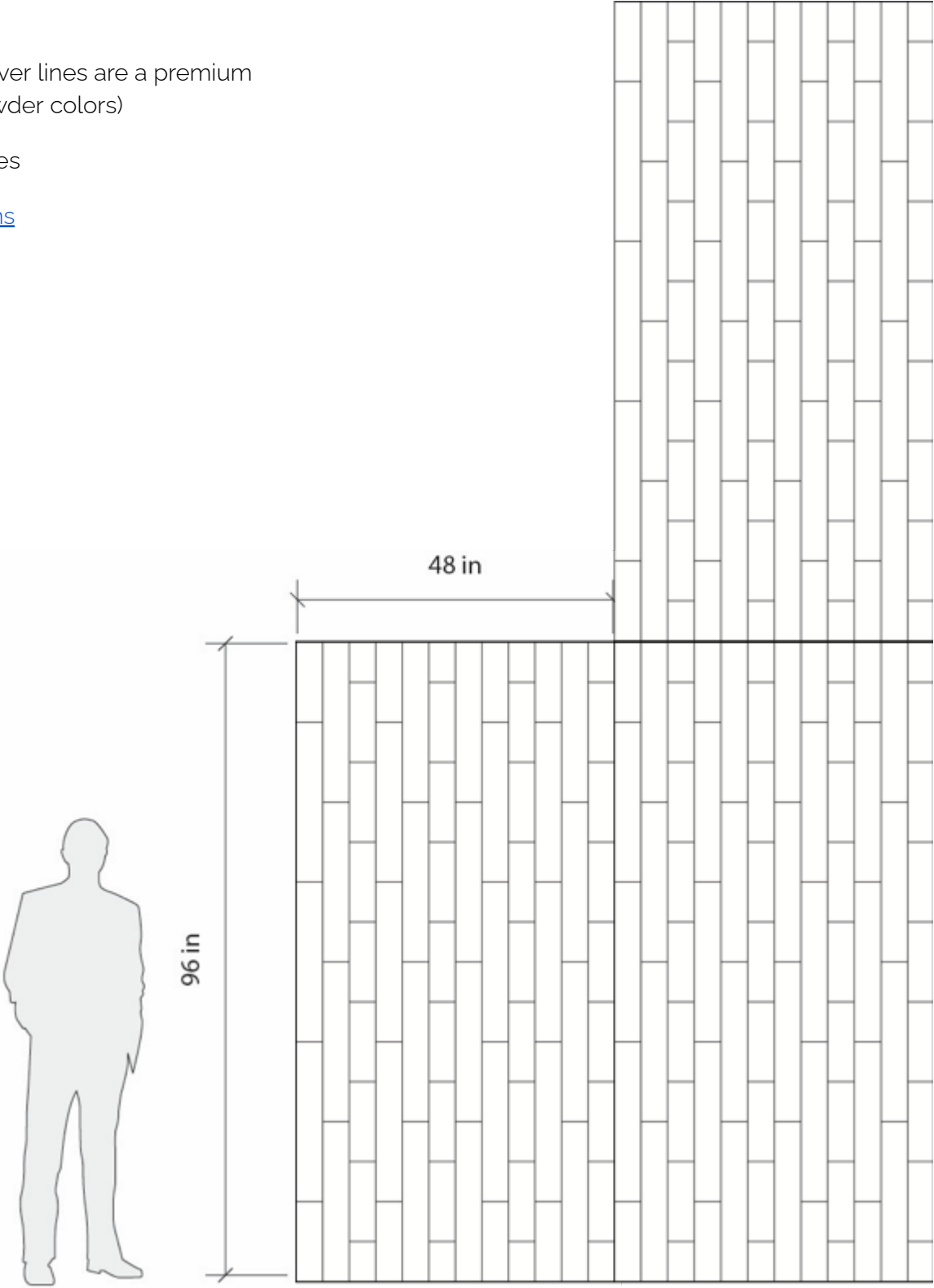
Pattern Style: Geometric, Linear

Pattern Repeat: 1'x4'

Engraved lines are 3/16" (silver lines are a premium option – not available in powder colors)

Pattern will match on all sides

[> view standard color options](#)



LINKS PATTERN

[< BACK TO PATTERNS](#)

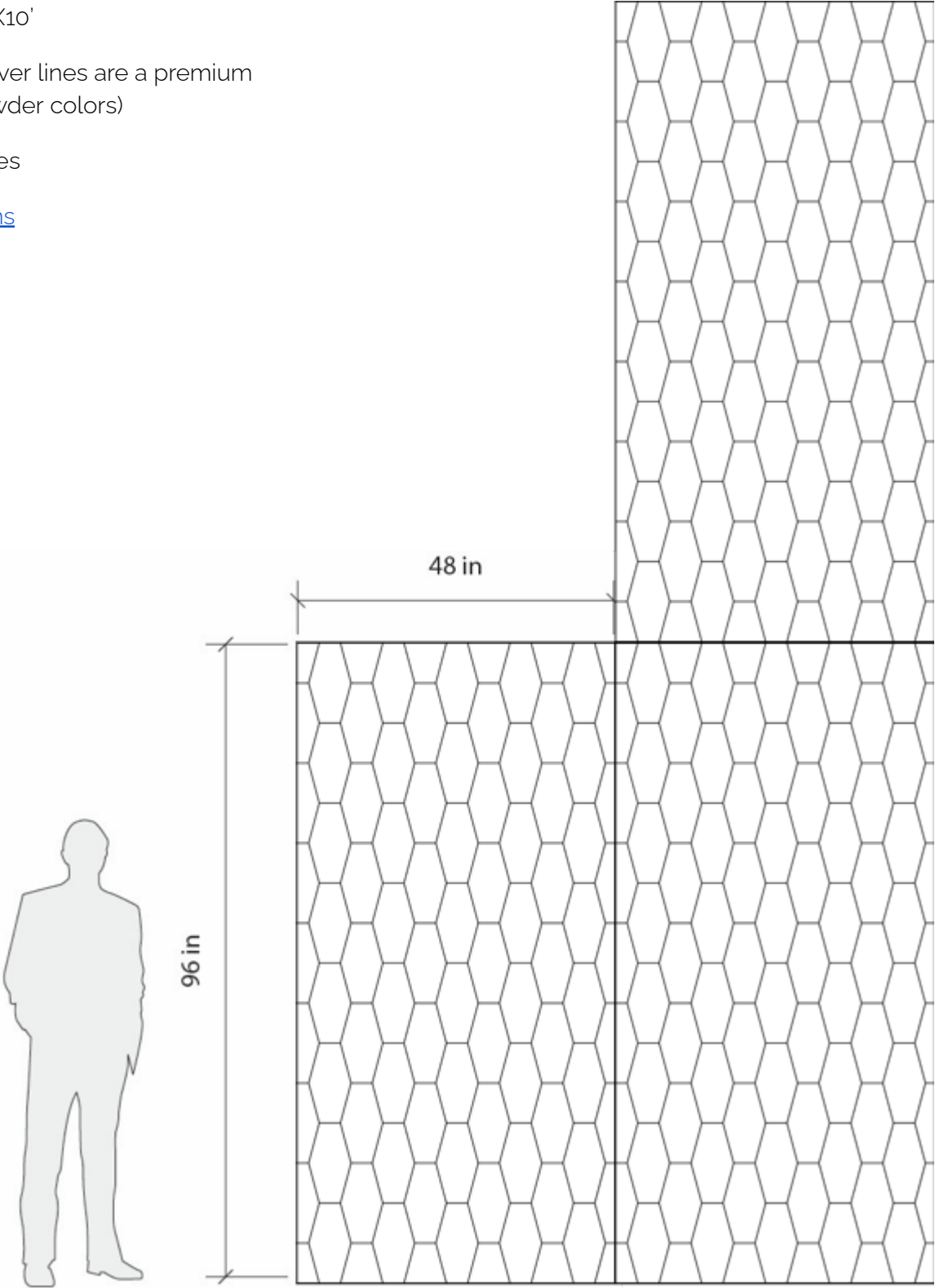
Pattern Style: Geometric, Linear

Pattern Repeat: 4'X8' and 4'X10'

Engraved lines are 3/16" (silver lines are a premium option – not available in powder colors)

Pattern will match on all sides

[> view standard color options](#)



CURRENT PATTERN

[< BACK TO PATTERNS](#)

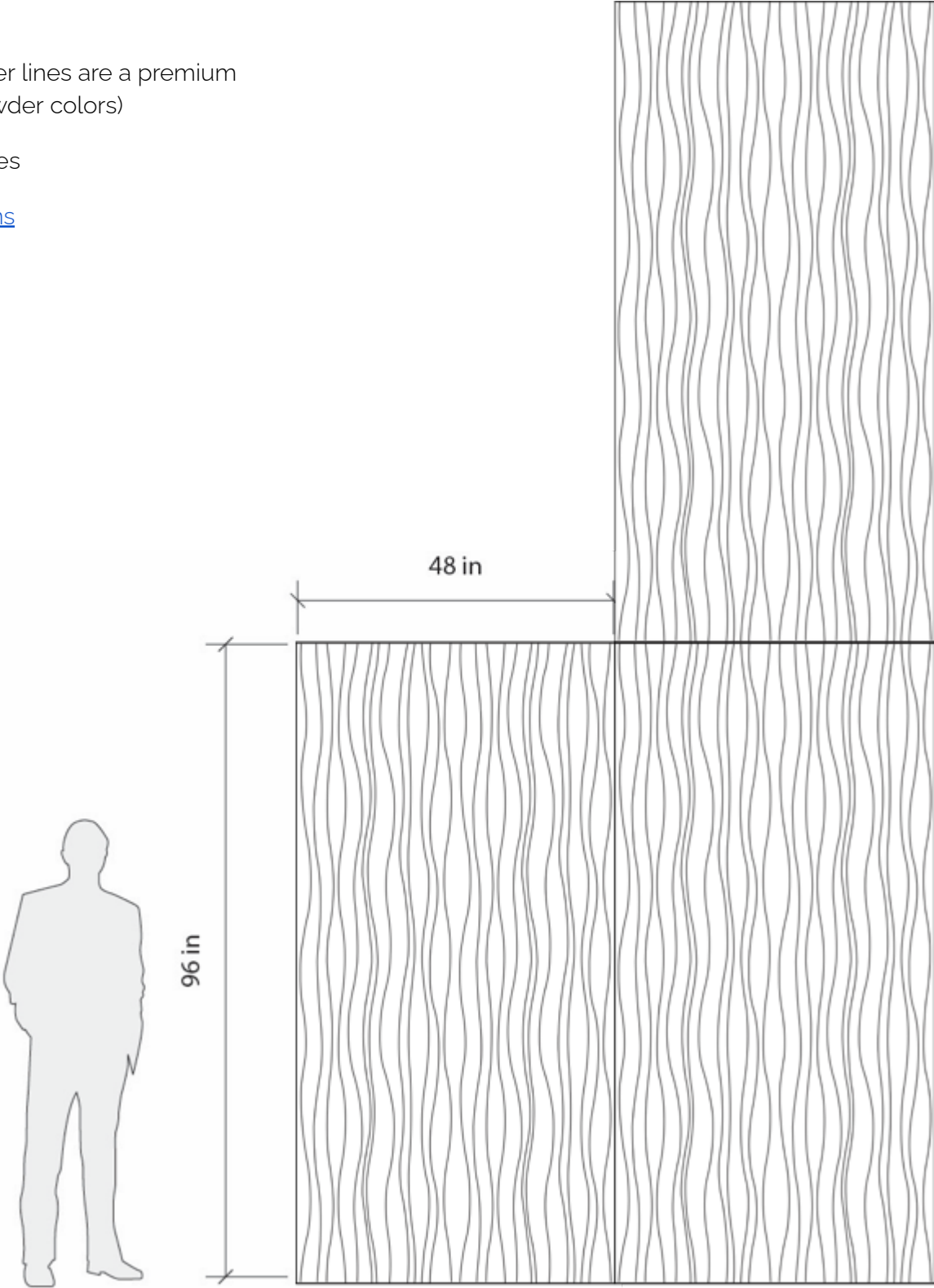
Pattern Style: Organic, Linear

Pattern Repeat: 2'x4 or 2'x5'

Engraved lines are 1/4" (silver lines are a premium option – not available in powder colors)

Pattern will match on all sides

[> view standard color options](#)



CIRCUIT PATTERN

[< BACK TO PATTERNS](#)

Pattern Style: Linear

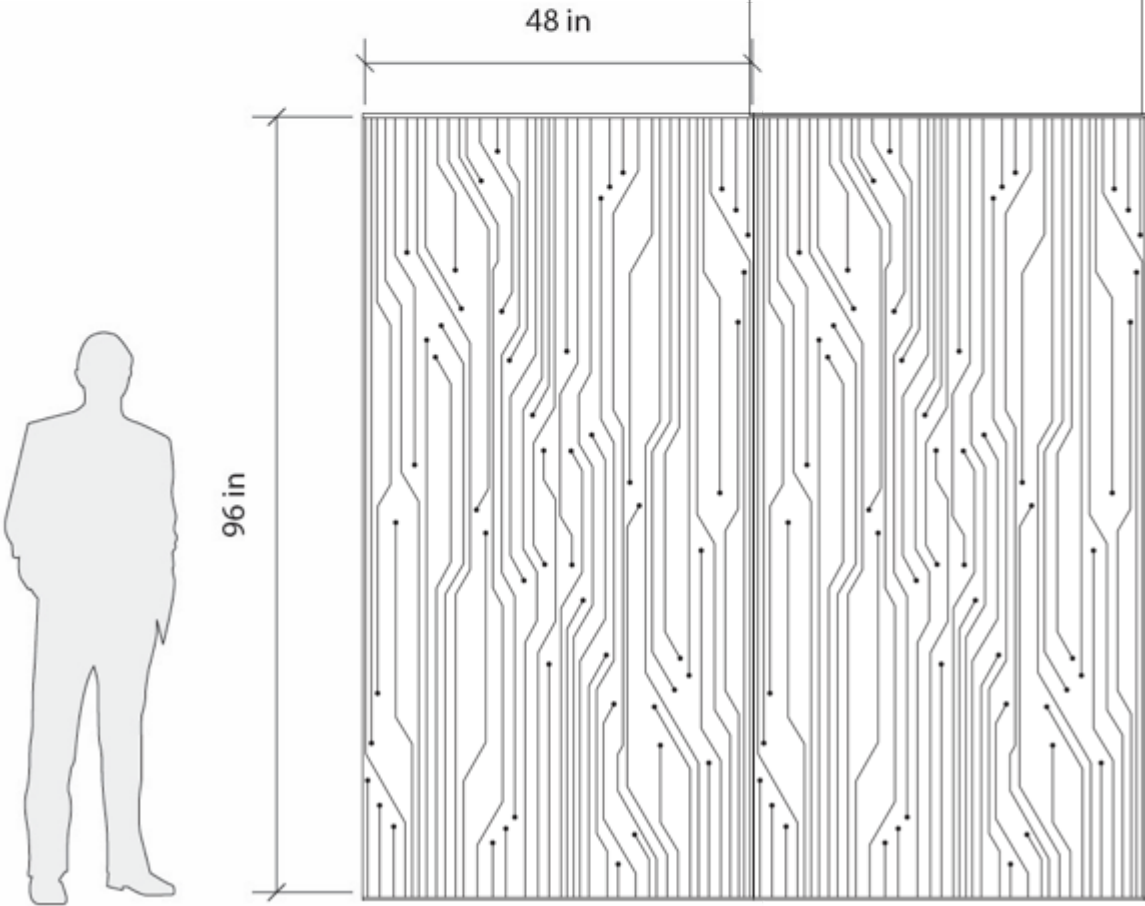
Pattern Repeat: 4'X8' and 4'X10'

Engraved lines are 3/16" circles are 1/2" in diameter
(silver lines are a premium option – not available in powder colors)

Pattern will match on long sides only.

[> view standard color options](#)

Contact us
for help with stacked
sections



MATRIX PATTERN

[< BACK TO PATTERNS](#)

Pattern Style: Geometric

Pattern Repeat: 8"x8"

Engraved circles are ¼" & ½" diameters
and are always painted - silver circles not an option.

Pattern will match on all sides

[> view standard color options](#)

