



Corrugated Collection DESIGN GUIDE

[PRODUCT DESCRIPTION](#)

[FEATURES AND BENEFITS](#)

[SPECIFICATIONS](#)

[CORRUGATED PROFILE](#)

[TRIMS AND FRAMING FOR INSTALLATION](#)

[STANDARD COLORS](#)

[SAMPLING](#)

[STOCK AND AVAILABILITY](#)

[SUSTAINABILITY](#)

[WORKABILITY](#)

[CLEANING INSTRUCTIONS](#)

[GENERAL WARRANTY](#)

PRODUCT DESCRIPTION

The Corrugated Collection takes an innovative approach to a traditional material by incorporating dimension, color and visual texture to uniquely define public spaces in airports, restaurants, hospitals, shopping malls and corporate buildings.

FEATURES AND BENEFITS

- Standard corrugated profile
- Solid and Perforated Aluminum options
- Suitable for Interior/external Walls, Ceilings, Columns, & Dividers
- Trims and hardware available to complete your installation
- Health Product Declarations (HPDs) available for LEED credits

SPECIFICATIONS

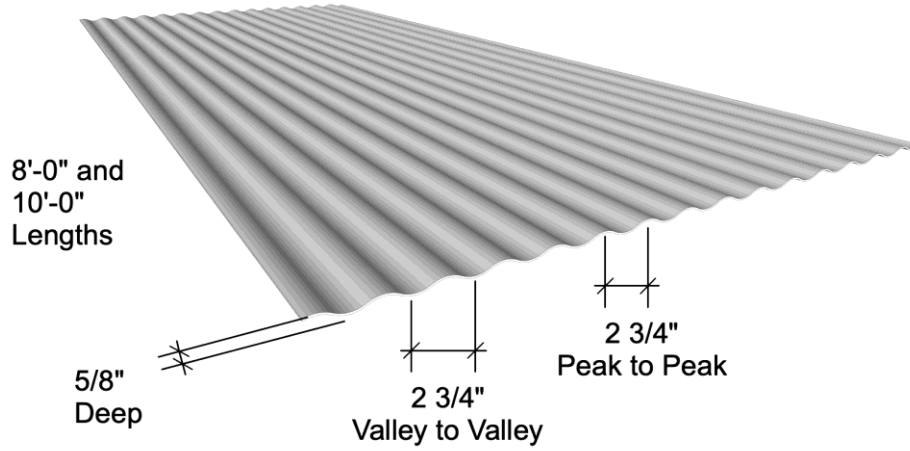
Materials .040" solid core Aluminum [ASTM B209] weighing roughly 0.6 lbs per square foot
.063" Perforated Aluminum [ASTM B209] weight vary per hole patterns

Panel Sizes 44-1/2" x 96" and 44-1/2" x 120"
Skinz Collection Corrugated Panels are typical 44-1/4" x 96" and 44-1/4" x 120"
1/4" sheet width tolerance

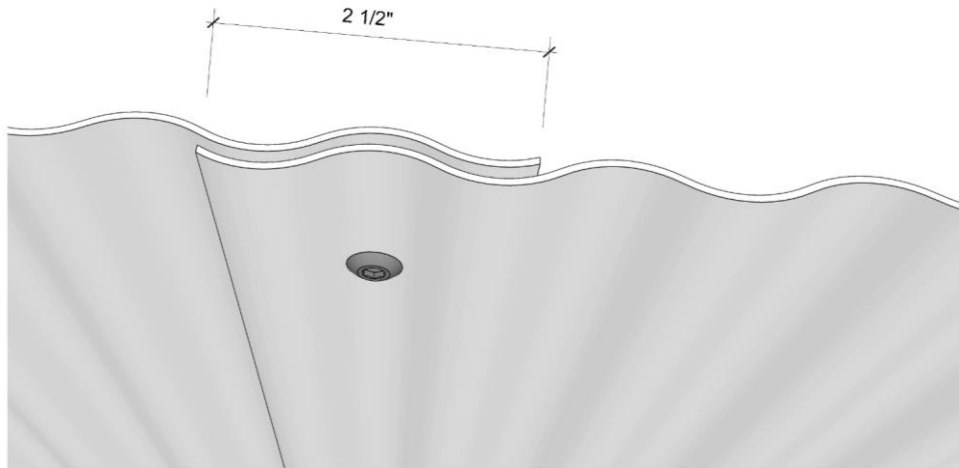
Finishes Choose from our standard Powder Coat Colors which offer superior scratch resistance for interior/external applications.
Also available in Moz Color Collections including Classic, Gradients, Blendz/Patina, Graphix and Digital Imagery.

CORRUGATED PROFILE

Distance from peak to peak is $2\frac{3}{4}$ ". Distance from valley to valley is $2\frac{3}{4}$ ". Depth from valley to peak is $\frac{5}{8}$ ". Starting with a 48" wide sheet of aluminum, the finished width will shrink to approx $44\frac{1}{2}$ " wide when corrugated but can vary by up to $\frac{1}{4}$ ". The corrugations always run parallel to the longest side of the sheet.

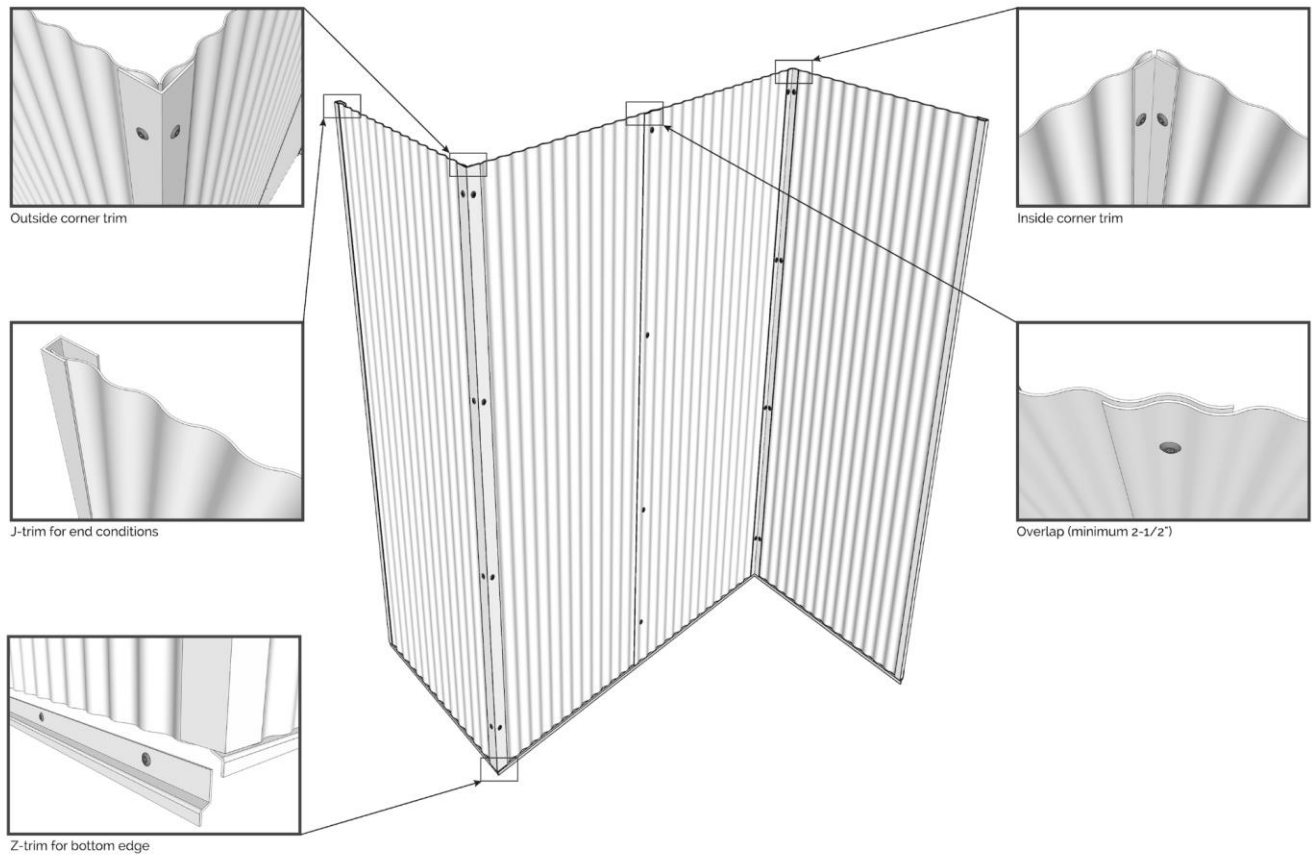


An overlap at seams will ensure the continuation of the corrugation. The overlap is approx $2\frac{1}{2}$ " and can vary depending on the panel size. For calculating the amount of material, it's best to allow for a 3" overlap so you can deduct 3" from each panel width to calculate your net coverage.



TRIMS AND FRAMING FOR INSTALLATION

Corrugated panels should be hardware fastened to the mounting surface with blocking provided by the contractor as needed. The wall diagram below shows 8' tall panels.



TRIMS Available in 8' and 10' lengths. Can be cut in the field as needed. Can be painted to match with some restrictions		(t) Thickness	Dimensions
Outside corner trim		.125" Alum	(A) 2-½" x 2-½" <i>Includes pre-drilled 3/16" holes every 24"</i>
Inside corner trim		.125" Alum	(A) 1-½" x 1-½" <i>Includes pre-drilled 3/16" holes every 24"</i>
J-trim for end conditions		.090" Alum	(A) 1-½" x (B) 15/16" x (C) 5/8" <i>Includes pre-drilled 3/16" holes every 24"</i>
Z-trim for bottom edge		.090" Alum	(A) 1-½" x (B) 15/16" x (C) 3/8" <i>Includes pre-drilled 3/16" holes every 16"</i> <i>May need to be notched at ends in the field.</i>

HARDWARE Available for visible fasteners upon request. (All non-visible fasteners by others) Can be painted to match with some restrictions		
For Interior Use #8 x 1-¼" FIN/Trim Head Screws 	For Exterior Use into metal #10 x 1-¼" Self Tapping screw - square drive 	For Exterior Use into wood #12 x 1-¼" Phillips pan tek screws

STANDARD COLORS

Powder Coat Colors

Choose from standard powder coat colors in a variety of smooth, textured, metallic or gloss finishes offering superior scratch resistance for interior/exterior applications with a 5yr exterior warranty. Ask about our Ultra Durable Exterior finishes offering a 10 to 20 year warranty.



Black Sand



Black Matte



Rust



Cognac Sand



Bronze Sand



Rusted Copper



Copper Metallic



Cream Metallic



Gold Metallic



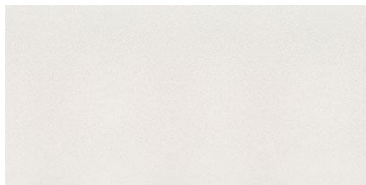
Dark Grey Metallic



Nickel



Silver Metallic



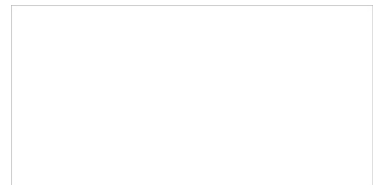
Snow



White Sand



White Matte



Bengal White

Also available in other Móz [Classic](#), [Blendz/Patina](#), [Gradient](#) and [Digital/Graphix](#) Color Collections.

Visit our [website](#) for a complete list of pattern and color options. Custom colors are also available.

SAMPLING

Samples are made from .040" aluminum in 3.5" x 5" size. Additional samples may be sent if an exact sample is not available at the time of order. If you would like to request samples, please visit our [Sample Request Form](#) online.

STOCK AND AVAILABILITY

Our products are made to order and take approximately 3-4 weeks to manufacture. Larger and more complex orders may take longer.

SUSTAINABILITY

Móz Metals are proudly Made in the USA. We provide domestically sourced materials which are manufactured from our solar powered factory in Oakland California. Móz Metals can contribute to LEED credits, to learn more visit mozdesigns.com/sustainability.

WORKABILITY

The corrugated aluminum material can be cut, trimmed and notched using standard woodworking tools with carbide cutting blades. Be sure to secure the material such as clamping between layers of plywood. Test cut on scrap piece if possible. More information on our [Corrugated Metals](#) can be found online.

CLEANING INSTRUCTIONS

A complete guide to cleaning can be found online for all of our finishes here <https://mozdesigns.com/about-us/download-specs> Contact us with any questions.

GENERAL WARRANTY

Due to the production process, no two sheets are exactly alike. Some surface irregularities as well as color and pattern variations will appear. We recommend that you inspect the material before cutting or mounting by simply lifting up the edge of the protective mask and laying it back down. If any material proves to be defective, Móz Designs will be liable for the cost of that material only. In order to prove material defective a sample must be provided to Móz Designs for review. No other warranty is expressed or implied.