



# Blendz Patina Collection DESIGN GUIDE

## TABLE OF CONTENTS

[PRODUCT DESCRIPTION](#)

[FEATURES AND BENEFITS](#)

[SPECIFICATIONS](#)

[STANDARD COLORS](#)

[DESIGN CONSIDERATIONS](#)

[SAMPLING](#)

[STOCK AND AVAILABILITY](#)

[SUSTAINABILITY](#)

[HANDLING, CARE, AND WORKING WITH METAL](#)

[CLEANING INSTRUCTIONS](#)

[GENERAL WARRANTY](#)

## PRODUCT DESCRIPTION

The Blendz Patina collection was created to transform environments to invoke a calming mood of intrigue and interest with washes of colors and textures inspired by nature.

## FEATURES AND BENEFITS

- Over 30 standard designs and colorways ( suitable for interior/exterior applications) with custom options available
- Cost effective decorative feature elements
- Durable and easy to clean metal finishes
- Easy to specify as a sheet material for laminate use or as a finish of choice on our column, wall, and divider solutions

## SPECIFICATIONS

Material            Solid core Aluminum ASTM B209 .040" (1.016 mm) weighing roughly .60 lbs/ft<sup>2</sup>  
Custom thickness up to .125" (3.17 mm)  
Also available on perforated, laser cut, engraved or corrugated materials

Panel Sizes        4' x 8' (1.2 m x 2.4 m) and 4' x 10' (1.2 m x 3.0 m.)  
Panel squareness is subject to a 3/16" (4.7 mm) tolerance.  
Custom sizes available with a max size of 5' x 10'.

Finishes            Polycoat finish for interior/exterior applications.  
Tuffcoat and Durafilm finishes are also available.

## STANDARD COLORS

Over 30 standard colorways suitable for interior and exterior applications with a 5yr exterior warranty. Custom colors also available. Visit our [website](#) for a complete list of color and grain pattern options.



*NEW* Patina 212D



Patina 212 Fog



*NEW* Patina 212L Fog



*NEW* Patina 193



Patina 111a



Patina 191



*NEW* Patina 110L



Patina 110



*NEW* Patina 107 Fog



Patina 109 Fog



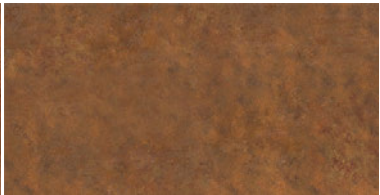
Patina 114



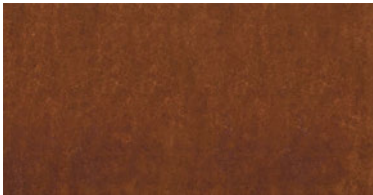
*NEW* Patina 116 Fog



*NEW* Patina 122



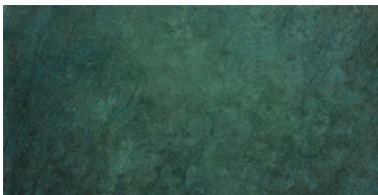
Patina 131



*NEW* Patina 132



*NEW* Patina 127



*NEW* Patina 137



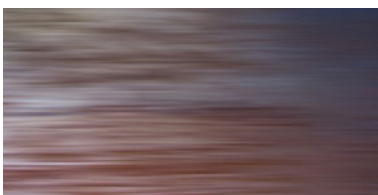
*NEW* Patina 135 Fog



Patina 162 Coarse or Fog



Painta 201



Patina 167  
Coarse, Fog or Bamboo



Patina 168



Blendz 420  
Coarse, Bamboo, or Kelp



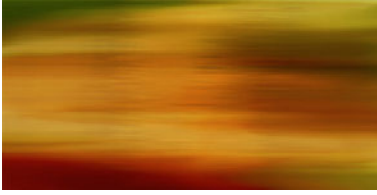
Blendz 430  
Coarse, Clouds, Bamboo, or Kelp



Blendz 442  
Coarse, Bamboo, or Kelp



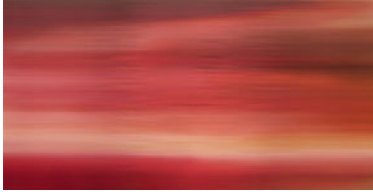
Blendz 453  
Coarse, Bamboo, or Kelp



Blendz 397a  
Coarse, Bamboo, or Kelp



Blendz 488  
Coarse, Bamboo, or Kelp



Blendz 392a  
Coarse, Bamboo, or Kelp



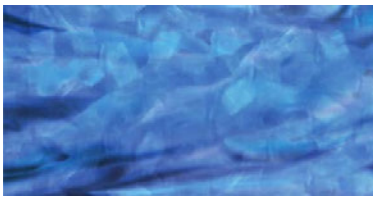
Blendz 418  
Coarse, Bamboo, or Kelp



Blendz 312a  
Coarse, Bamboo, Kelp, or Shimmer



Blendz 410  
Coarse, Bamboo, or Kelp



Blendz 419 Clouds



Blendz 425  
Bamboo or Coarse

## DESIGN CONSIDERATIONS

### Seaming Considerations

Each panel design is produced in a full 4'x8' repeat. Most designs can be seamed along the long edges as shown in figure 1. Some panels can be rotated in the field to create a non-repeated and more flowing design as shown in figure 2. Panels in 4'x10' size will be stretched as shown in figure 3 so try to avoid mixed sizes which may cause artwork to misalign.

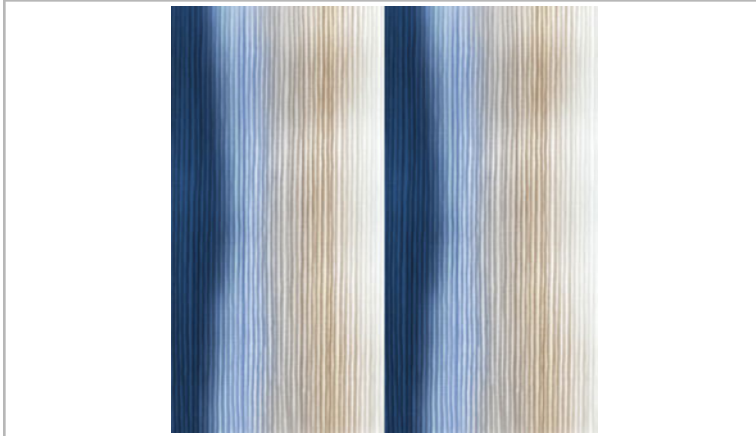


Figure 1: Two 4'x8' panels side by side in repeat

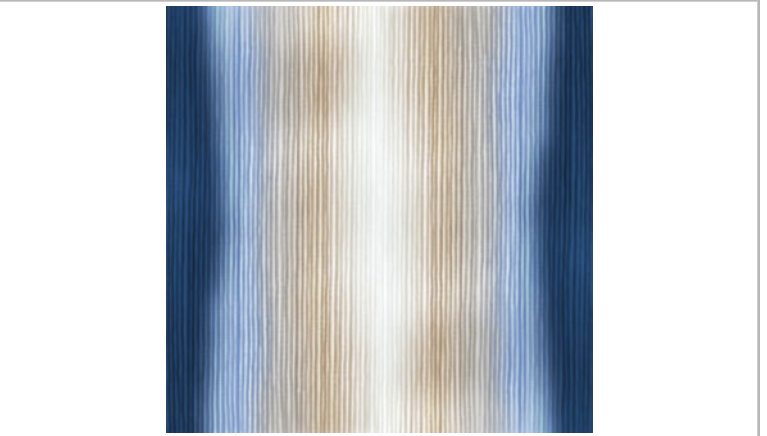


Figure 2: Two 4'x8' panels with the right panel being rotated in the field by 180 degrees.

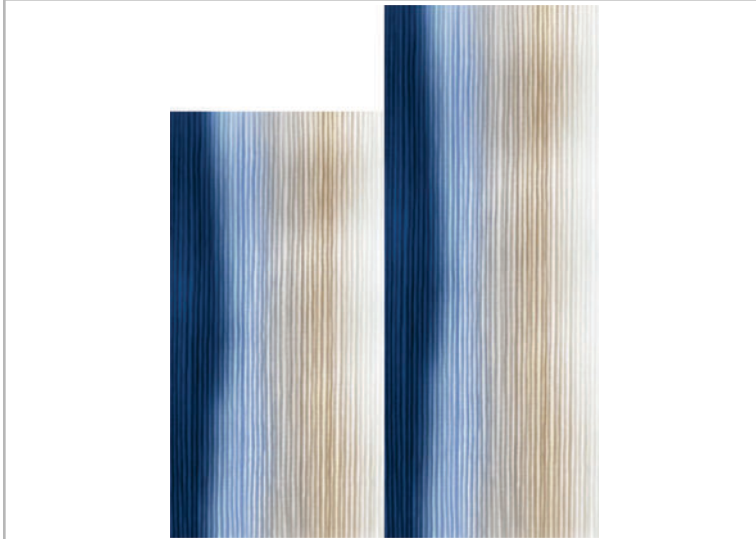


Figure 3: 4'x8' panel next to a 4'x10' panel  
Artwork on 4'x10' panel is stretched



At the factory we can provide custom artwork to span over larger areas. Some limitations apply. Contact us for support.

## SAMPLING

Samples are made from .040" aluminum in 3.5" x 5" size. Due to the large scale design, samples are often scaled down to represent the full colorway.. If you would like to request samples, please visit our [Sample Request Form](#) online.

## STOCK AND AVAILABILITY

Our products are made to order and take approximately 2-3 weeks to manufacture sheets and longer to manufacture pre-build solutions such as column and wall products. Larger and more complex orders may take longer. For your convenience, we offer a short list of materials from overruns that are discounted and available to ship in just a few days through our [Quickship](#) site.

## SUSTAINABILITY

Móz Metals are proudly Made in the USA. We provide domestically sourced materials which are manufactured from our solar powered factory in Oakland California. Móz Metals can contribute to LEED credits, view our [Sustainability Page](#) online for more information.

## HANDLING, CARE, AND WORKING WITH METAL

Complete instructions on how to handle, care, and work with Móz Metals can be found online in our [Móz Metal Sheets Technical Information](#) document.

## CLEANING INSTRUCTIONS

For general cleaning, use a damp, lint free soft cloth or sponge with mild, non-abrasive soap and water.

For heavy cleaning and removal of grease, use oil based mineral spirits or naphtha. Low concentration ammonia based cleaning agents such as household glass cleaners may also be used.

For disinfection you may also use a disinfectant spray such as Lysol® or Mixture of 60% alcohol 40% water solution.

DO NOT treat with rubbing compounds or lacquer thinner as this may dissolve or etch the coating.  
NEVER use abrasives, abrasive cleaners or a pressure washer as it will abrade the surface coating.

Detailed cleaning and touch up instructions can be found online in our [Móz Metals Cleaning Guidelines](#) document

## GENERAL WARRANTY

Due to the production process, no two sheets are exactly alike. Some surface irregularities as well as color and pattern variations will appear. We recommend that you inspect the material before cutting or mounting by simply lifting up the edge of the protective mask and laying it back down. If any material proves to be defective, Móz Designs will be liable for the cost of that material only. In order to prove material defective a sample must be provided to Móz Designs for review. No other warranty is expressed or implied.