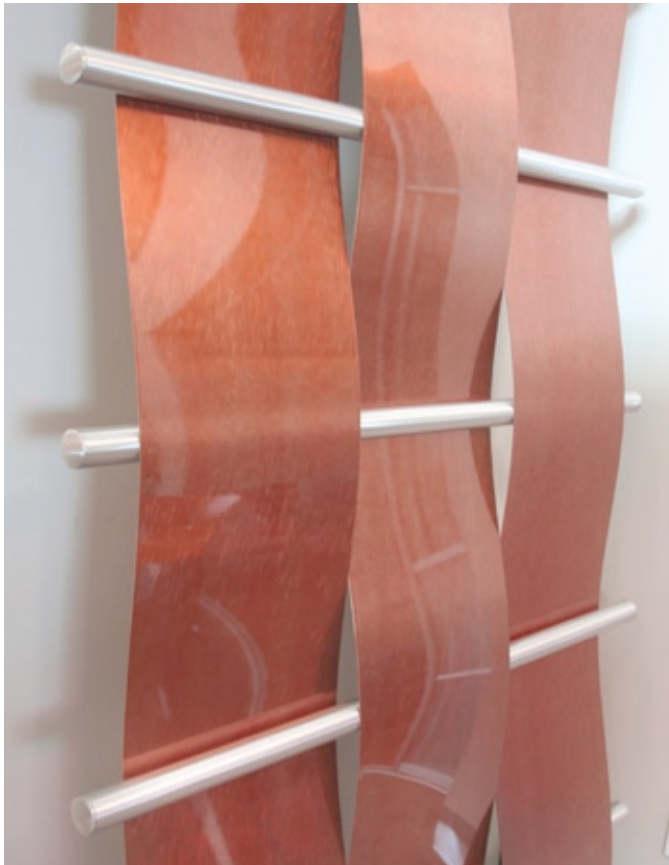


## Natural Beauty of Wood & Strength of Metal

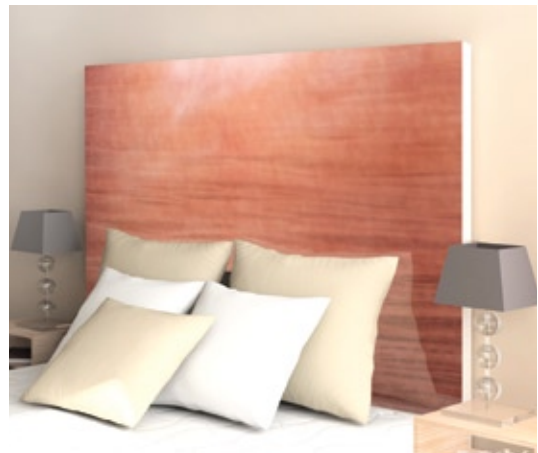
MetalWoodz is a stunning innovation; exotic, minimalist and elegant, suitable for any environment. The natural beauty of wood with the strength and form-ability of aluminum. MetalWoods are aluminum sheets hand etched with a fine-grain or a coarse-grain pattern. We apply a series of color gradations resulting in a deep rich texture. Our wood grains and warm tones have been carefully chosen to match virtually any décor.



*WallWeave in Brazilian Cherry Fine Grain*



*Custom Color Mix in Coarse Grain*



*Headboard in Brazilian Cherry Coarse Grain*

## Applications

Expand your design palette with new wood inspired finishes by Móz. Our Wood tones feature a timeless harmony of minimalist design, richness of wood and vibrance of metal. Incorporating wood tones in hotel rooms, lobbies, hallways, lounges and restaurants will accentuate your space with a warm and luxurious feel. Create an elegant environment by specifying as a backdrop or a featured design element.

- Fabricate MetalWoodz into column covers, wall weaves and other "curved" products not available with real wood or fiber backed laminates.
- Available in 3 new wood tones including European Beech, Brazilian Cherry and Honduran Mahogany.

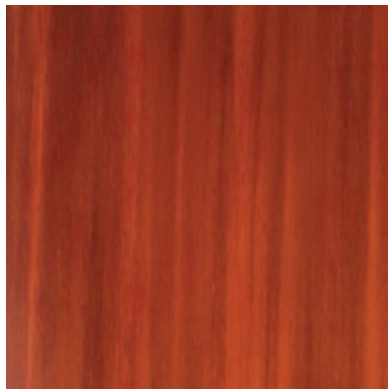
## Features and Benefits

- Móz MetalWoodz are a great solution – offering the design flexibility and strength of metal with the warm tones of wood
- Wood tones include European Beech, Brazilian Cherry and Honduran Mahogany
- Available in fine-grain or coarse-grain etched patterns
- MetalWoodz is available with our new PolyCoat Satin finish, creating a smooth satin texture
- Faux wood grain materials that contour with the *formability* of aluminum
- Móz Designs will fabricate MetalWoodz into column covers, wall weaves and other “curved” products not available with real wood or fiber backed laminates

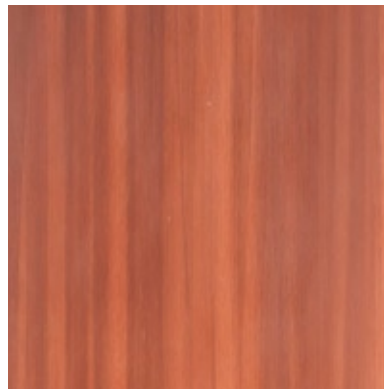
## Materials

- Available in 48" X 96" and 48" X 120" sheets
- Standard aluminum sheet is .040" thick; other thicknesses are available. Material specification is 5052 / ASTM B209
- Aluminum sheets are 80% post-industrial recycled material contributing to LEED 2.0 MR Credit 4 recycled content

## Wood Tones



*Honduran Mahogany*



*Brazilian Cherry*



*European Beech*

## Grains



*Coarse Grain*



*Fine Grain*

## Finishes

- Recommended finish is PolyCoat Satin
- Additional finishes available with MetalWoodz include: PolyCoat Gloss, DuraFilm, TuffCoat